



SELF-CONTAINED CUBER

PARTS LIST

[HE]

M120

M120-D001,D002,D003,D004,D005,D008,D009,D010
-D011,D014,D015

M120-D200,D201,D202,D203,D204,D205,D208,D209
-D210,D211,D214,D215

P-0 DEC. 2024

IM-240DPE
IM-240XPE
IM-240DPE-23
IM-240XPE-23
IM-240DPE-32
IM-240XPE-32
IM-240DWPE
IM-240XWPE
IM-240DWPE-23
IM-240XWPE-23
IM-240DWPE-32
IM-240XWPE-32

List of Specifications

IM-240DPE	M120	Air-cooled Standard
IM-240XPE	M120-D001	Air-cooled Standard, X TYPE
IM-240DPE-23	M120-D002	23mm ICE of IM-240DPE
IM-240DPE-32	M120-D003	32mm ICE of IM-240DPE
IM-240XPE-23	M120-D004	23mm ICE of IM-240XPE
IM-240XPE-32	M120-D005	32mm ICE of IM-240XPE
IM-240DWPE	M120-D008	Water-cooled Standard
IM-240XWPE	M120-D009	Water-cooled Standard, X TYPE
IM-240DWPE-23	M120-D010	23mm ICE of IM-240DWPE
IM-240XWPE-23	M120-D011	23mm ICE of IM-240XWPE
IM-240DWPE-32	M120-D014	32mm ICE of IM-240DWPE
IM-240XWPE-32	M120-D015	32mm ICE of IM-240XWPE
IM-240DPE-U	M120-D200	Air-cooled Standard
IM-240XPE-U	M120-D201	Air-cooled Standard, X TYPE
IM-240DPE-U-23	M120-D202	23mm ICE of IM-240DPE
IM-240DPE-U-32	M120-D203	32mm ICE of IM-240DPE
IM-240XPE-U-23	M120-D204	23mm ICE of IM-240XPE
IM-240XPE-U-32	M120-D205	32mm ICE of IM-240XPE
IM-240DWPE-U	M120-D208	Water-cooled Standard
IM-240XWPE-U	M120-D209	Water-cooled Standard, X TYPE
IM-240DWPE-U-23	M120-D210	23mm ICE of IM-240DWPE
IM-240XWPE-U-23	M120-D211	23mm ICE of IM-240XWPE
IM-240DWPE-U-32	M120-D214	32mm ICE of IM-240DWPE
IM-240XWPE-U-32	M120-D215	32mm ICE of IM-240XWPE

List of Functions

Basic		Cube
Basic + UV	U	UltraCube

AUXILIARY CODE

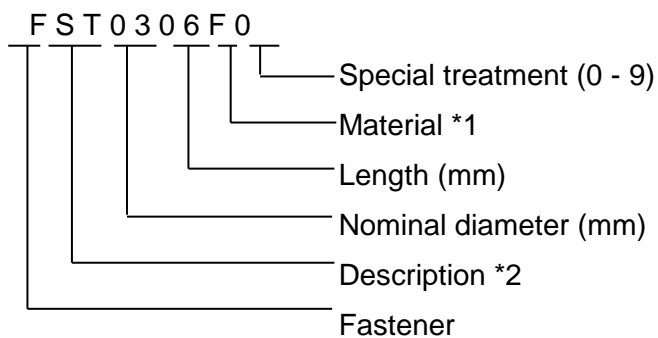
U - 1

The auxiliary code is the first two characters in the serial number. The first character indicates the production year. Years progress or regress in alphabetical order. The series of letters and skipped letters depend on UL listing, production, and model. See the auxiliary code(s) and corresponding year(s) on the front cover.

The second character indicates significant part changes within the same year. Base is "1" and this number advances for each change. If there is no significant part change at the turn of the year, this number starts from "0."

FASTENER PART NUMBER

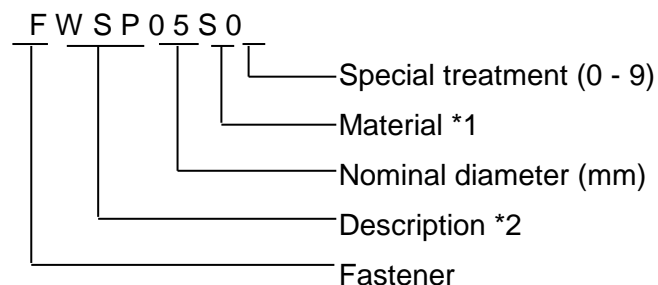
SCREWS



*1 Material

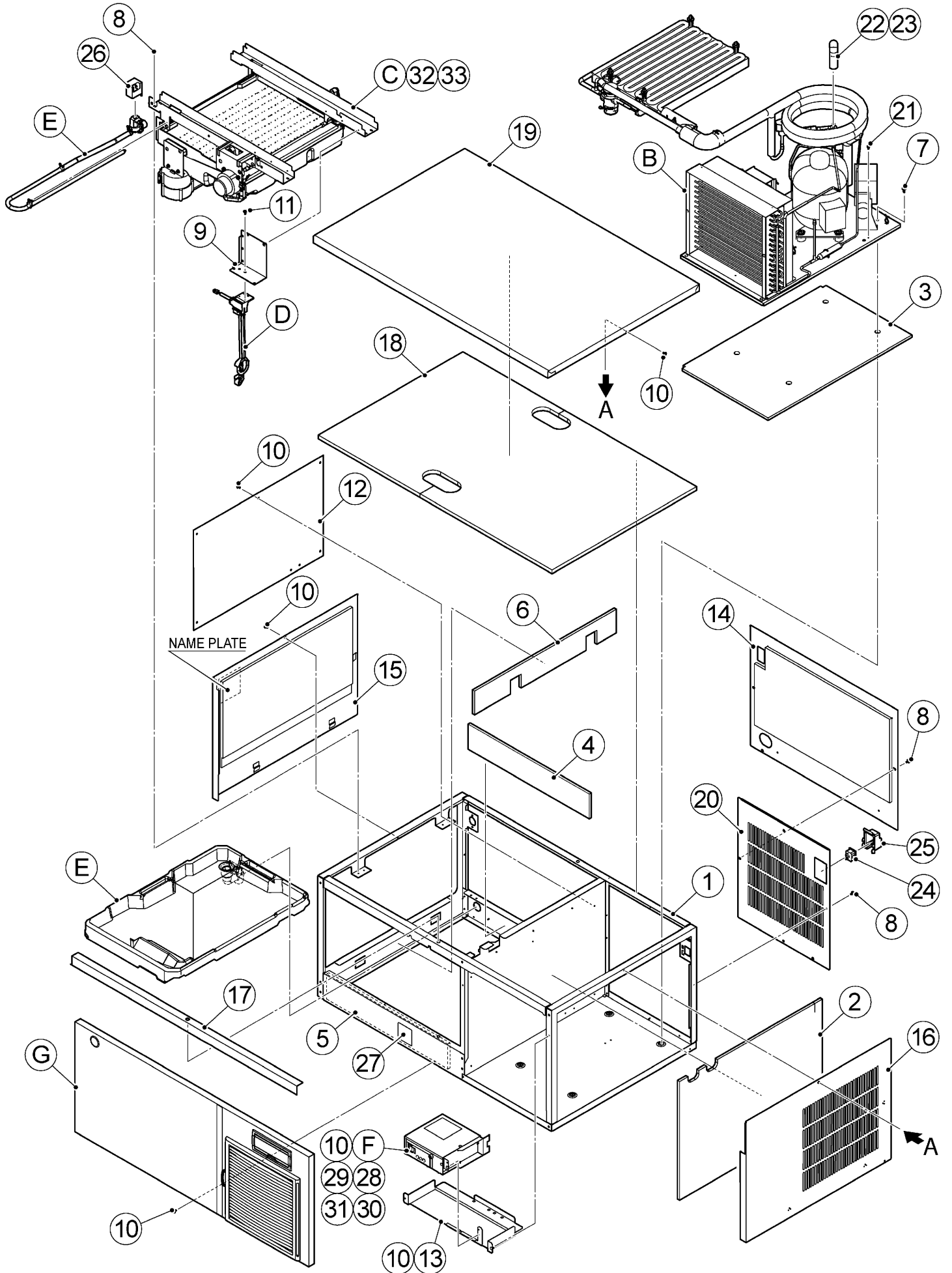
F: Steel
S: Austenitic stainless steel
M: Martensitic stainless steel
B: Copper alloy
P: Polycarbonate
N: Polyamide
V: PVC
A: ABS
X: Polyacetal
L: Aluminum

NUTS & WASHERS



*2 Description

First letter
S: Machine screw
T: Tapping screw
M: Wood screw
B: Bolt
W: Washer
N: Nut

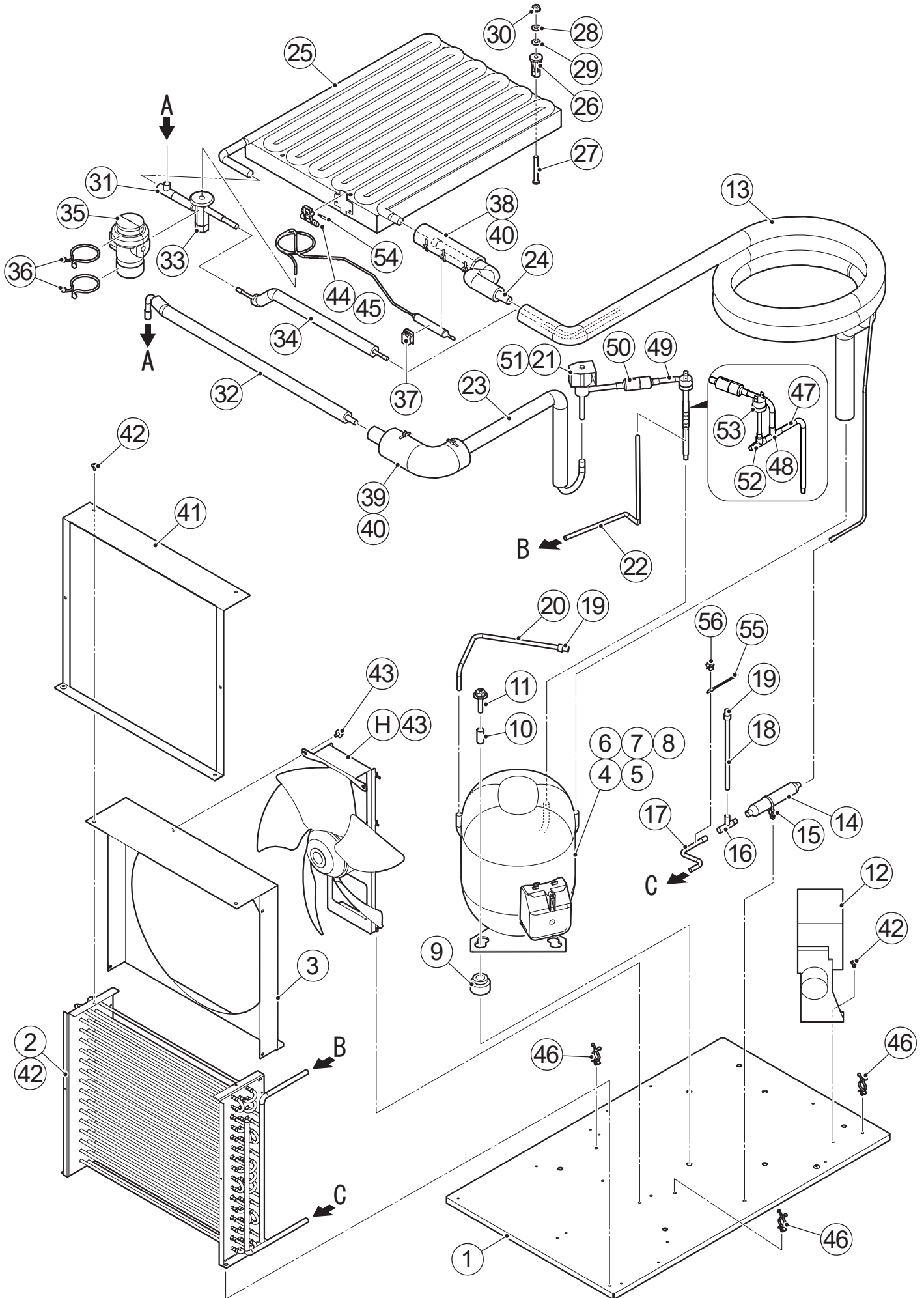


MODEL: **IM-240DPE(-23/32)**TITLE: **A. ICE CUBER ASSY**

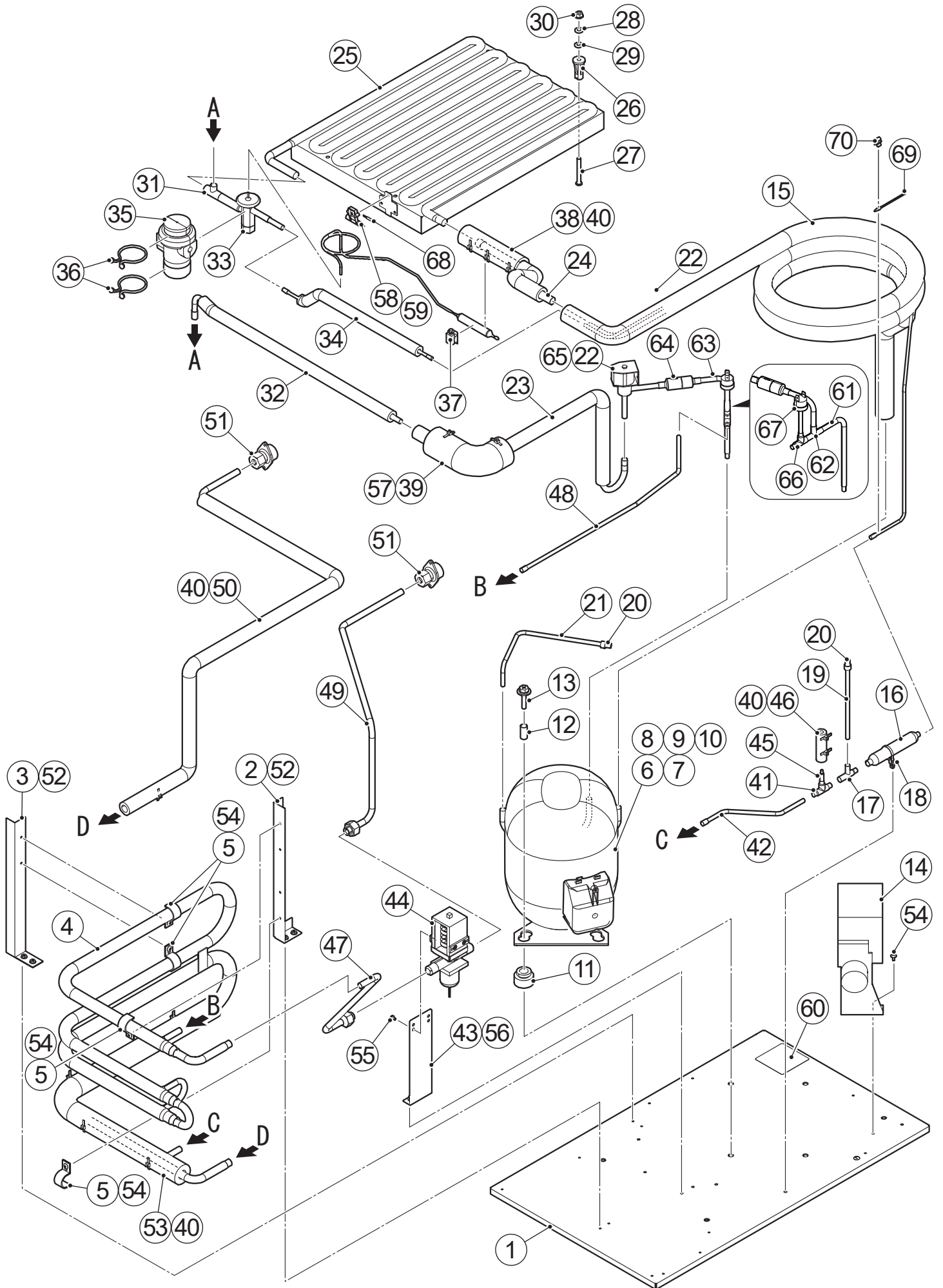
INDEX NO.	DESCRIPTION	MATERIAL OR MODEL NUMBER	PART NUMBER	REQ'D NUMBER				
				P-0				
B	REFRIGERATION ASSY		1E0204A01	1				
C	MECHANISM ASSY		1E0205A01	1				
D	BIN SWITCH AY		3E0426A06	1				
E	WATER CIRCUIT ASSY		2X0229A01	1				
F	CONTROL BOX ASSY (A)		3E0346A05	1				
G	FRONT COVER		3E0416A01	1				
P	ACCESSORIES		A04667-01	1				
1	UNIT FRAME		1E0202G01	1				
2	INSULATION-SEPARATOR		3E0429P01	1				
3	INSULATION-CHASSIS		4E0285P01	1				
4	INSULATION-FRAME		4E0286P01	2				
5	INSULATION-FRAME		4E0297P01	1				
6	INSULATION-SIDEFAME L		4E0287P01	1				
7	HEX HEAD BOLT		FBH0612S0	4				
8	FLANGE BOLT (C-TITE)		FTR0408M0	15				
9	BRACKET - BIN CONTROL SWITCH		486135M01	1				
10	TRUSS HEAD SCREW		FST0408S0	15				
11	TRUSS HEAD TAPPING SCREW T2		FT20410S0	2				
12	PROTECTOR - SEPARATOR		390519P01	1				
13	SEPARATOR		3E0422M01	1				
14	REAR PANEL		3E0432G01	1				
15	SIDE PANEL-L		3E0431G01	1				
16	SIDE PANEL - R		3E0410G01	1				
17	HOOK-TOP PANEL		3Y5019M01	1				
18	INSULATION-TOP PANEL		3H9603-01	1				
19	TOP PANEL		1E0203M01	1				
20	REAR PANEL R		3E0419M01	1				
21	PAN HEAD MACHINE SCREW		FSP0408S0	1				
22	INSULATION TUBE		H71527130	1				
23	TIE	CV-150N,T30R	7920-0003	1				
24	CONNECTOR		P00246-01	1				
25	COVER - CONNECTOR		2X0271P01	1				
26	COVER-WATER VALVE		3Y6277M01	1				
27	LABEL - R290		474520L01	1				
28	HARNESS		2E0279A01	1				
29	FERRITE CORE		P02369-01	1				
30	BAG		4X1559-07	6				
31	BAG		4X1559-01	1				

MODEL: **IM-240DWPE(-23/32)**TITLE: **A. ICE CUBER ASSY**

INDEX NO.	DESCRIPTION	MATERIAL OR MODEL NUMBER	PART NUMBER	REQ'D NUMBER				
				P-0				
B	REFRIGERATION ASSY		1E0208A01	1				
C	MECHANISM ASSY		1E0205A01	1				
D	BIN SWITCH AY		3E0426A06	1				
E	WATER CIRCUIT ASSY		2X0229A01	1				
F	CONTROL BOX ASSY (A)		3E0346A05	1				
G	FRONT COVER		3E0427A01	1				
P	ACCESSORIES		A04667001	1				
1	UNIT FRAME		1E0202G01	1				
2	BRACKET - FITTING		4E0022M01	1				
3	INSULATION-SEPARATOR		3E0429P01	1				
4	INSULATION-CHASSIS		4E0285P01	1				
5	INSULATION-FRAME		4E0286P01	2				
6	INSULATION-FRAME		4E0297P01	1				
7	INSULATION-SIDEFAME L		4E0287P01	1				
8	HEX HEAD BOLT		FBH0612S0	4				
9	FLANGE BOLT (C-TITE)		FTR0408M0	15				
10	BRACKET - BIN CONTROL SWITCH		486135M01	1				
11	TRUSS HEAD SCREW		FST0408S0	21				
12	TRUSS HEAD TAPPING SCREW T2		FT20410S0	2				
13	PROTECTOR - SEPARATOR		390519P01	1				
14	SEPARATOR		3E0422M01	1				
15	REAR PANEL		3E0432G01	1				
16	SIDE PANEL-L		3E0431G01	1				
17	SIDE PANEL - R		3E0410G01	1				
18	HOOK-TOP PANEL		3Y5019M01	1				
19	INSULATION-TOP PANEL		3H9603-01	1				
20	TOP PANEL		1E0203M01	1				
21	REAR PANEL R		3E0419M02	1				
22	PAN HEAD MACHINE SCREW		FSP0408S0	1				
23	INSULATION TUBE		H71527130	1				
24	TIE		7920-0003	1				
25	CONNECTOR		P00246-01	1				
26	COVER - CONNECTOR		2X0271P01	1				
27	COVER-WATER VALVE		3Y6277M01	1				
28	LABEL - R290		474520L01	1				
29	LABEL-CONNECTION		464541-01	1				
30	HARNESS		2E0279A01	1				
31	FERRITE CORE		P02369-01	1				



MODEL: IM-240DPE(-23/32)			TITLE: B.REFRIGERATION ASSY					
INDEX NO.	DESCRIPTION	MATERIAL OR MODEL NUMBER	PART NUMBER	REQ'D NUMBER				
				P-0				
H	FAN MOTOR ASSY		3E0362A01	1				
1	BASE		3E0417G01	1				
2	CONDENSER		E00004-01	1				
3	SHROUD		2E0346M01	1				
4	COMPRESSOR		P02809-01	1				
5	PROTECTOR		P02812-01	1				
6	PROTECTOR RETAINER		P02815-01	1				
7	SCREW		P00840-01	1				
8	TERMINAL COVER		P02814-01	1				
9	GROMMET		P00846-01	4				
10	SPACER		P00847-01	4				
11	BOLT		436206-03	4				
12	BOX WITH ELECTRICAL COMPONENTS		P02841-01	1				
13	HEAT EXCHANGER		2X2949G02	1				
14	DRIER		P06910-01	1				
15	CABLE TIE		P05042-01	1				
16	TEE		420041-03	1				
17	COPPER TUBE C - H		4E0284M01	1				
18	COPPER TUBE C - COND		477814M01	1				
19	LOCKRING STOPPER		P01677-01	2				
20	PROCESS PIPE		4E0291M01	1				
21	HOT GAS VALVE METAL COMPONENT		P04242-0A	1				
22	COPPER TUBE B - H		4E0283M01	1				
23	PIPE(B)-HOT GAS		3Y9742G01	1				
24	PIPE(B)-LOW SIDE		4Y9552G01	1				
25	EVAPORATOR	28mm	2X6691G01	1				
		23mm	2X6735G01	1				
		32mm	2X6736G01	1				
26	COLLAR		3H3879-01	4				
27	SCREW-EVAPORATOR	28mm/32mm	4Y4922M02	4				
		23mm	4Y4922M03	4				
28	WASHER		4H0777-01	4				
29	WASHER	23mm	4H1365-05	4				
30	FLANGE NUT		FNHF06S0	4				
31	TEE		420041-06	1				
32	PIPE(C)-HOT GAS		3Y5069G01	1				
33	EXPANSION VALVE		P02819-01	1				
34	PIPE(C)-HIGH SIDE		3Y5067G01	1				
35	VALVE COVER		3Y3051P01	1				



MODEL: **IM-240DWPE(-23/32)**TITLE: **B.REFRIGERATION ASSY**

INDEX NO.	DESCRIPTION	MATERIAL OR MODEL NUMBER	PART NUMBER	REQ'D NUMBER				
				P-0				
1	BASE		3E0417G01	1				
2	MOUNTING BRACKET - CONDENSER		4E0121M01	1				
3	MOUNTING BRACKET - CONDENSER		4E0296M01	1				
4	CONDENSER - WATER COOLED		2X4255G01	1				
5	CLAMP(B)-CONDENSER		4H0622-01	4				
6	COMPRESSOR		P02809-01	1				
7	PROTECTOR		P02812-01	1				
8	PROTECTOR RETAINER		P02815-01	1				
9	SCREW		P00840-01	1				
10	TERMINAL COVER		P02814-01	1				
11	GROMMET		P00846-01	4				
12	SPACER		P00847-01	4				
13	BOLT		436206-03	4				
14	BOX WITH ELECTRICAL COMPONENTS		P02841-01	1				
15	HEAT EXCHANGER		2X2949G02	1				
16	DRIER		P06910-01	1				
17	TEE		420041-03	1				
18	CABLE TIE		P05042-01	1				
19	COPPER TUBE C - COND		477814M01	1				
20	LOCKRING STOPPER		P01677-01	2				
21	PROCESS PIPE		4E0291M01	1				
22	HOT GAS VALVE METAL COMPONENT		P04242-0A	1				
23	PIPE(B)-HOT GAS		3Y9742G01	1				
24	PIPE(B)-LOW SIDE		4Y9552G01	1				
25	EVAPORATOR	28mm	2X6691G01	1				
		23mm	2X6735G01	1				
		32mm	2X6736G01	1				
26	COLLAR		3H3879-01	4				
27	SCREW-EVAPORATOR	28mm/32mm	4Y4922M02	4				
		23mm	4Y4922M03	4				
28	WASHER		4H0777-01	4				
29	WASHER	23mm	4H1365-05	4				
30	FLANGE NUT		FNHF06S0	4				
31	TEE		420041-06	1				
32	PIPE(C)-HOT GAS		3Y5069G01	1				
33	EXPANSION VALVE		P02819-01	1				
34	PIPE(C)-HIGH SIDE		3Y5067G01	1				
35	VALVE COVER		3Y3051P01	1				
36	CLAMP		P00752-01	2				
37	CLAMP		443461-01	1				

