



HOSHIZAKI

HRF-77 DUAL-TEMP 2 Door

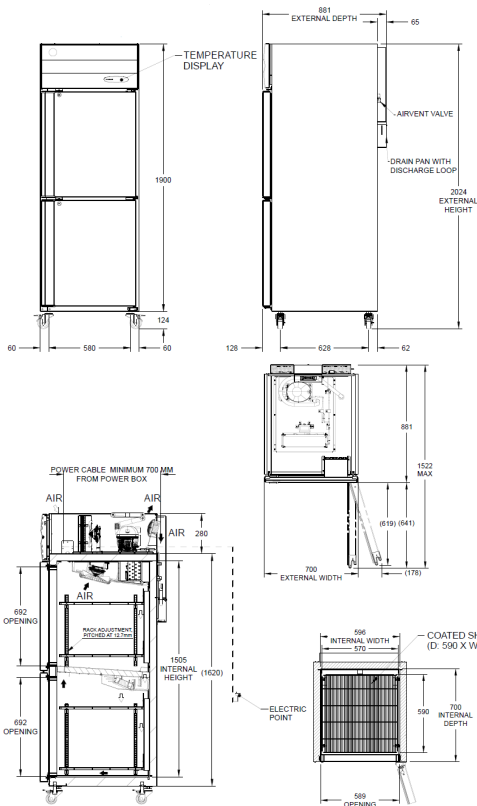
Model Number
97000189



PRODUCT FEATURES

- Stainless steel interior and exterior.
- Top: Freezer – Bottom: Fridge
- 4 x adjustable shelves with clips.
- Lockable Door
- Programmable Digital controller and display.
- 2 years parts and labour warranty.
- Comes standard with 4 x lockable castors.
- Optional Adjustable legs 150 - 180mm (Sold separately).
- Additional Shelves 580mm x 520mm & Runner (Sold separately)
- Heated mullion

TECHNICAL DRAWING



PRODUCT SPECIFICATION

Exterior	Stainless steel, Galvanized Steel Powder Coated Rear/Bottom
Interior	Stainless Steel
Freezer Storage Capacity	257L
Fridge Storage Capacity	285L
Outside Dimensions	700mm (W) x 881mm (D) x 2024mm (H) (Height Includes Castors)
Inside Dimensions	Each section: 596mm (W) x 700mm (D) x 692mm (H)
Refrigerant	R290
AC Supply Voltage	230V AC / 50 Hz / 10 Amp
Weight Net/Gross (kg)	123kg/146kg
Cabinet Lighting	LED Lamp 1 x 7.5W
Ambient Operating Temp	10-43°C
Fridge Temperature Control	Electronic 1°C to 4°C
Freezer Temperature Control	Electronic -16°C to -22°C
Electrical Circuit Protection	Thermal P&B Circuit Breaker
Shelf per Door	4 Heavy Duty Shelves

INSTALLATION REQUIREMENTS

- The refrigerator/freezer should not be located next to ovens, grills or other high heat producing equipment. *
- Do not expose the unit to direct sunlight or higher temperatures. *
- Allow at least 120 cm clearance at the front of the unit for smooth door operation. Also allow at least 30cm clearance from the ceiling to the top of the unit for proper air circulation. *
- *Refer to manual for full installation & maintenance requirements



Descriptions and specifications are subject to change at any time, without notice.
Illustrations for demonstration purposes. Copyright © 2025 Hoshizaki Lancer Pty Ltd. All right reserved.



For free 12 month extended warranty, register online within 4 weeks of purchase date. [hoshizaki.com.au](https://www.hoshizaki.com.au)