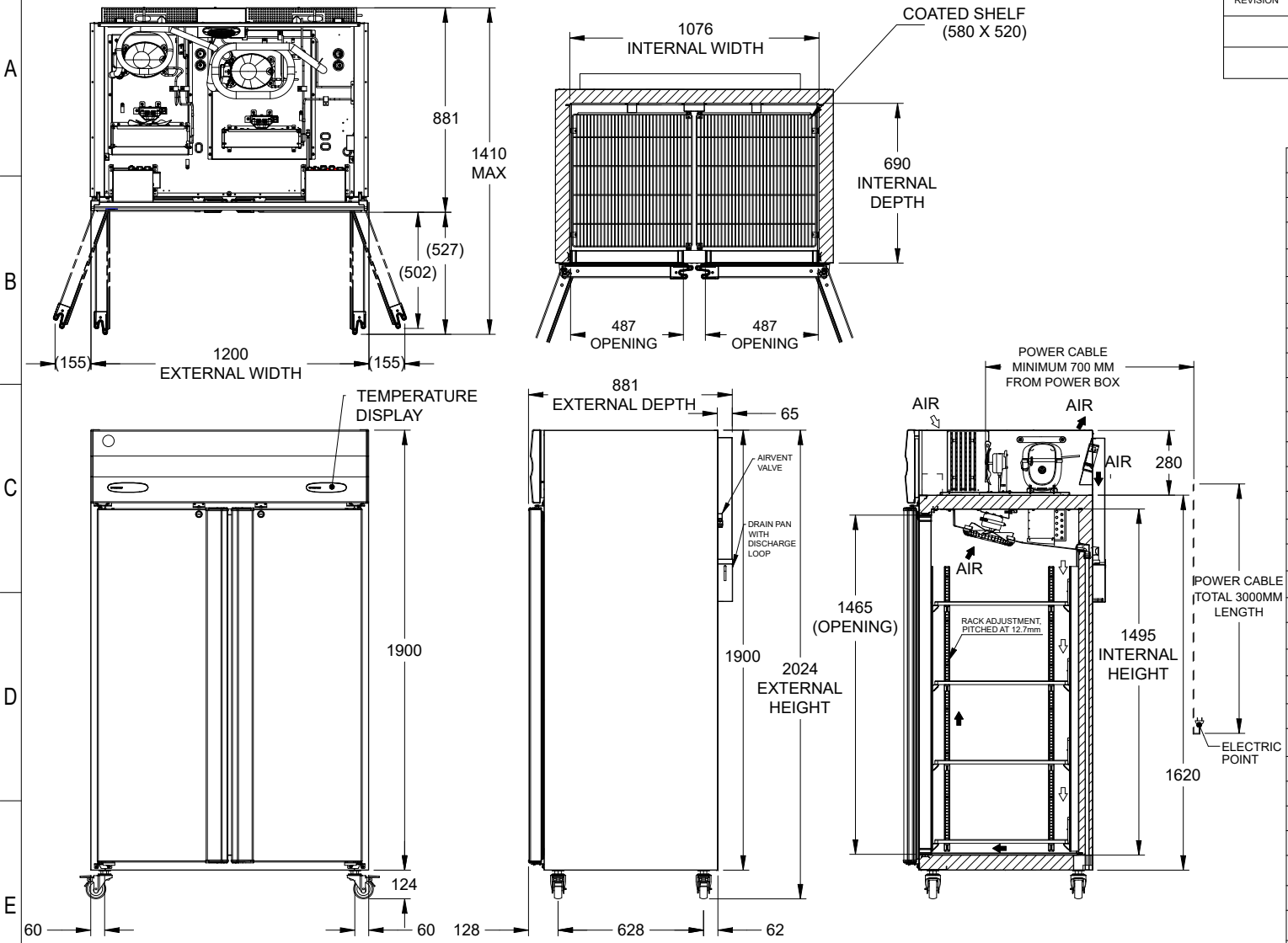


NOTE: COMPONENT AND ASSEMBLY MUST BE COMPLIANT TO APPLICABLE RECENT ROHS DIRECTIVES.



- OPTIONS:
1. BOTTOM & REAR PANEL CAN BE AVAILABLE IN SUS 430/ SUS304
 2. ALL EXTERIOR & INTERIOR CAN BE AVAILABLE IN SUS 304 (IN THIS OPTION BOTTOM & REAR PANEL ARE PAINTED)

ITEM	HOSHIZAKI REFRIGERATOR-FREEZER
MODEL	HRFWE127LS4-LD
POWER SUPPLY	SINGLE PHASE, 230V AC, 50HZ
RATED CURRENT	FREEZER: 1.9A REFRIGERATOR: 1.3A
RATED POWER	FREEZER: 330W REFRIGERATOR: 280W
HEAT REJECTION	FREEZER: 887W REFRIGERATOR: 785W
POWER CORD	10 AMPS / 3 METER - 2 NOS.
EFFECTIVE CAPACITY	FREEZER: 463L / REFRIGERATOR: 463L
OUTSIDE DIMENSIONS	1200 (W) X 881 (D) X 2024 (H - WITH CASTOR)
INSIDE DIMENSIONS	FREEZER: 494 (W) X 690 (D) X 1495 (H) REFRIGERATOR: 494 (W) X 690 (D) X 1495 (H)
EXTERIOR	SS 430 HAIRLINE NO 4 FINISH, GALVANIZED STEEL POWDER COATED (BOTTOM)
INTERIOR	SS 430 HAIRLINE NO 4 FINISH
INSULATION	POLYURETHANE FOAM (CFC FREE)
INSULATION FOAM BLOWING AGENT	CYCLOPENTANE
REFRIGERATION SYSTEM	FORCED AIR CIRCULATION
DEFROST STSTEM	FREEZER: HEATER DEFROST (475W X 1NOS) REF.: IN COMPRESSOR OFF CYCLE
COMPRESSOR	FREEZER: 566 W REFRIGERATOR: 532 W
CONDENSER	FORCED (WIRE ON TUBE)
EVAPORATOR	FREEZER: Forced (Al. Fin & Cu. Tube) REF.: Forced (Al. Fin & Cu. Tube)
REFRIGERANT/ CHARGE	FREEZER: R290 / 80 gram REFRIGERATOR: R290 / 67 gram
TEMP. CONTROL	FREEZER: Electronic from -18°C to -22°C REFRIGERATOR: Electronic from 1°C to 4°C
DEFROST CONTROL	BY TEMPERATURE CONTROLLER
ELECTRIC CIRCUIT PROTECTION	NON RESETTABLE FUSE (GLASS FUSE) 10 AMP
COMPRESSOR PROTECTION	MOTOR PROTECTOR
CASTOR	NON ADJUSTABLE 4 NOS
SHELF	8 PCS
WEIGHT	NET: 175 KG (GROSS: APPROX 215KG)
PACKAGE	CARTON (WOODEN PALLET) 1285MM (W) X 994MM (D) X 2090MM(H)
ASSESSORIES	SHELF CLIPS & SHELVES
OPERATING CONDITIONS	AMBIENT TEMPERATURE: 10 TO 43°C VOLTAGE RANGE RATED VOLTAGE ±6%
CABINET LAMP (FOR LS4 VERSION)	C-TYPE 510MM, 2W, DC24V, 2 NOS.
LAMP DRIVER	ELECTRONIC DRIVER 20W

*WE RESERVE THE RIGHT TO MAKE CHANGES IN SPECIFICATIONS AND DESIGN WITHOUT PRIOR NOTICE

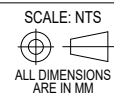
1. INSTALL THE PRODUCT PROPERLY IN ACCORDANCE WITH THE INSTRUCTIONS ON LOCATION, ELECTRICAL CONNECTIONS STATED IN THE INSTRUCTION MANUAL PROVIDED.
ALLOW 10MM EXTRA SPACE AT THE INSTALLATION SITE TO MEET ANY INSTALLATION REQUIREMENTS (ADDITIONAL SPACING IS ALSO REQUIRED FOR PROPER AIR FLOW AND PIPE CONNECTIONS).
2. THE HEAT REJECTION IS BASED ON THE REACHED PULL DOWN TEMPERATURE AT AMBIENT TEMPERATURE OF 43°C AND POWER SUPPLY OF 230VAC 50HZ.
THE AMPERAGE AND ELECTRIC CONSUMPTION ARE BASED ON MEASUREMENT AT AMBIENT TEMPERATURE OF 43°C AND POWER SUPPLY OF 230VAC 50HZ.

THIS ASSEMBLY DRAWING IS FOR ILLUSTRATION PURPOSE.
COMPONENTS, ASSEMBLY SEQUENCE MAY VARY DEPENDING UPON MANUFACTURING PRACTICES SPECIFIC TO MANUFACTURING LOCATIONS.
REFER PROCESS WORK INSTRUCTIONS FOR MORE DETAILS ON ASSEMBLY.
REFER SAP BOM FOR EXACT MATERIAL CONSUMPTION.

UNSPECIFIED TOLERANCES						
DIM	<6	6-30	30-120	120-400	400-1000	>1000
TOL	N/A	±1.0	±1.5	±2.0	±2.5	±3.0
UNSPECIFIED TOL. ON ANGLE ±0.5						

- 1 * () DIMENSIONS ARE IMPORTANT.
- 2 REFERENCE DIMENSIONS ARE MARKED WITH " () "
- 3 PART SHOULD BE FREE FROM SHARP EDGES & BURRS

REFERENCE STANDARD



SCALE: NTS
ALL DIMENSIONS ARE IN MM

DRAWN BY
PUSHPENDRA

CHECKED BY
KIRAN

APPROVED BY
PRATAP

TITLE
REACH-IN REFRIGERATOR

MODEL
HRFWE127LS4-LD

RELEASE DATE
20.11.2024

RELEASE STAGE:
RELEASED

DWG. NO:
0712749

SAP CODE
-

