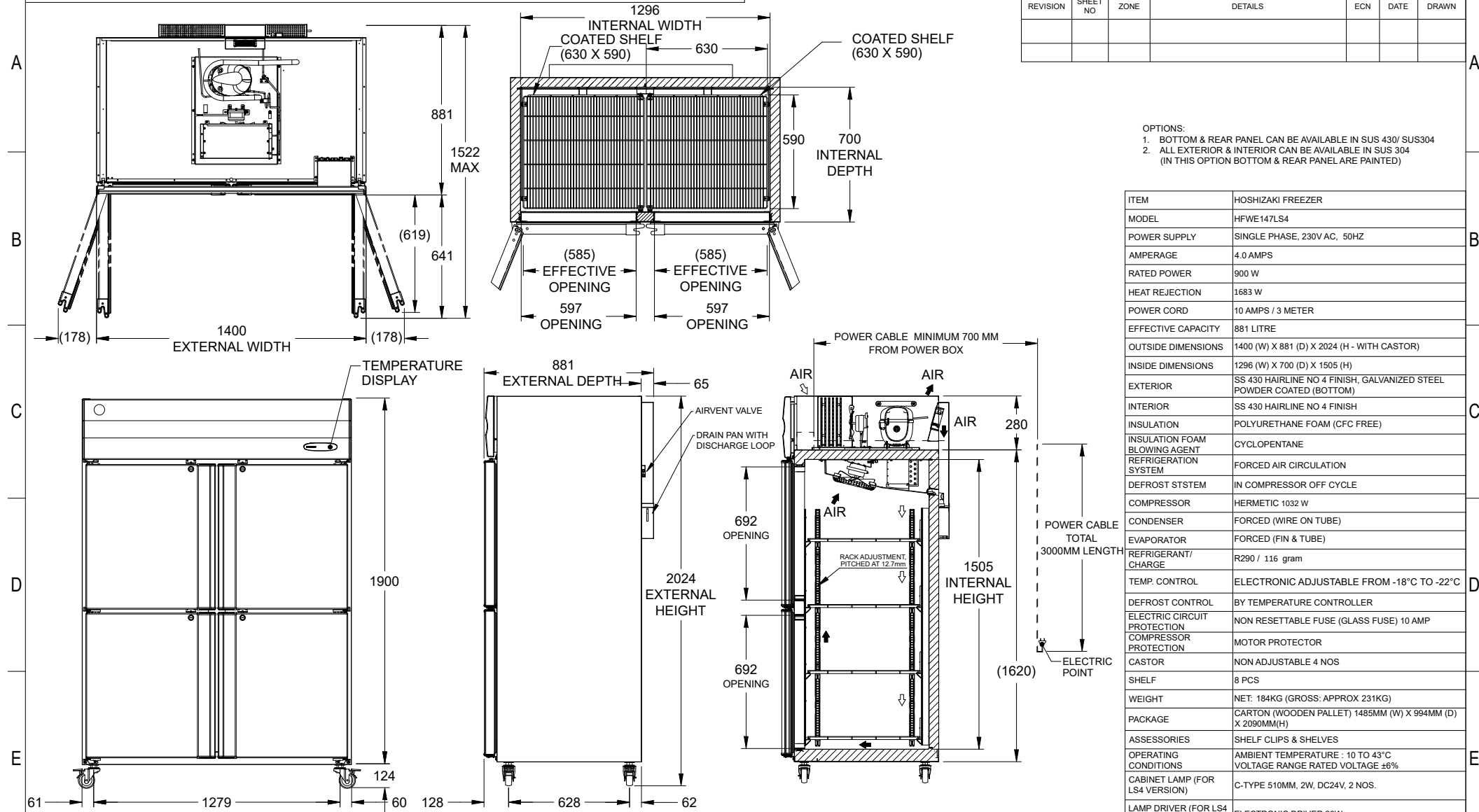


NOTE: COMPONENT AND ASSEMBLY MUST BE COMPLIANT TO APPLICABLE RECENT ROHS DIRECTIVES.

CHANGE NOTE						
REVISION	SHEET NO	ZONE	DETAILS	ECN	DATE	DRAWN



- OPTIONS:
- BOTTOM & REAR PANEL CAN BE AVAILABLE IN SUS 430/ SUS304
 - ALL EXTERIOR & INTERIOR CAN BE AVAILABLE IN SUS 304 (IN THIS OPTION BOTTOM & REAR PANEL ARE PAINTED)

ITEM	HOSHIZAKI FREEZER
MODEL	HFWE147LS4
POWER SUPPLY	SINGLE PHASE, 230V AC, 50HZ
AMPERAGE	4.0 AMPS
RATED POWER	900 W
HEAT REJECTION	1683 W
POWER CORD	10 AMPS / 3 METER
EFFECTIVE CAPACITY	881 LITRE
OUTSIDE DIMENSIONS	1400 (W) X 881 (D) X 2024 (H - WITH CASTOR)
INSIDE DIMENSIONS	1296 (W) X 700 (D) X 1505 (H)
EXTERIOR	SS 430 HAIRLINE NO 4 FINISH, GALVANIZED STEEL POWDER COATED (BOTTOM)
INTERIOR	SS 430 HAIRLINE NO 4 FINISH
INSULATION	POLYURETHANE FOAM (CFC FREE)
INSULATION FOAM BLOWING AGENT	CYCLOPENTANE
REFRIGERATION SYSTEM	FORCED AIR CIRCULATION
DEFROST STSTEM	IN COMPRESSOR OFF CYCLE
COMPRESSOR	HERMETIC 1032 W
CONDENSER	FORCED (WIRE ON TUBE)
EVAPORATOR	FORCED (FIN & TUBE)
REFRIGERANT/ CHARGE	R290 / 116 gram
TEMP. CONTROL	ELECTRONIC ADJUSTABLE FROM -18°C TO -22°C
DEFROST CONTROL	BY TEMPERATURE CONTROLLER
ELECTRIC CIRCUIT PROTECTION	NON RESETTABLE FUSE (GLASS FUSE) 10 AMP
COMPRESSOR PROTECTION	MOTOR PROTECTOR
CASTOR	NON ADJUSTABLE 4 NOS
SHELF	8 PCS
WEIGHT	NET: 184KG (GROSS: APPROX 231KG)
PACKAGE	CARTON (WOODEN PALLET) 1485MM (W) X 994MM (D) X 2090MM (H)
ASSESSORIES	SHELF CLIPS & SHELVES
OPERATING CONDITIONS	AMBIENT TEMPERATURE : 10 TO 43°C VOLTAGE RANGE RATED VOLTAGE ±8%
CABINET LAMP (FOR LS4 VERSION)	C-TYPE 510MM, 2W, DC24V, 2 NOS.
LAMP DRIVER (FOR LS4 VERSION)	ELECTRONIC DRIVER 20W

*WE RESERVE THE RIGHT TO MAKE CHANGES IN SPECIFICATIONS AND DESIGN WITHOUT PRIOR NOTICE

- INSTALL THE PRODUCT PROPERLY IN ACCORDANCE WITH THE INSTRUCTIONS ON LOCATION, ELECTRICAL CONNECTIONS STATED IN THE INSTRUCTION MANUAL PROVIDED. ALLOW 10MM EXTRA SPACE AT THE INSTALLATION SITE TO MEET ANY INSTALLATION REQUIREMENTS (ADDITIONAL SPACING IS ALSO REQUIRED FOR PROPER AIR FLOW AND PIPE CONNECTIONS).
- THE HEAT REJECTION IS BASED ON THE REACHED PULL DOWN TEMPERATURE AT AMBIENT TEMPERATURE OF 43°C AND POWER SUPPLY OF 230VAC 50HZ. THE AMPERAGE AND ELECTRIC CONSUMPTION ARE BASED ON MEASUREMENT AT AMBIENT TEMPERATURE OF 43°C AND POWER SUPPLY OF 230VAC 50HZ.

THIS ASSEMBLY DRAWING IS FOR ILLUSTRATION PURPOSE. COMPONENTS, ASSEMBLY SEQUENCE MAY VARY DEPENDING UPON MANUFACTURING PRACTICES SPECIFIC TO MANUFACTURING LOCATIONS. REFER PROCESS WORK INSTRUCTIONS FOR MORE DETAILS ON ASSEMBLY. REFER SAP BOM FOR EXACT MATERIAL CONSUMPTION.

UNSPECIFIED TOLERANCES						
DIM	<6	6-30	30-120	120-400	400-1000	>1000
TOL	N/A	±1.0	±1.5	±2.0	±2.5	±3.0
UNSPECIFIED TOL. ON ANGLE ±0.5						

SCALE: NTS
ALL DIMENSIONS ARE IN MM
DRAWN BY: PUSHPENDRA
CHECKED BY: KIRAN
APPROVED BY: PRATAP

TITLE		DWG. NO.	REVISION
REACH-IN REFRIGERATOR		0712751	A
MODEL		SAP CODE	
HFWE147LS4		-	
RELEASE DATE	SHEET	-	
20.11.2024	1 OF 1	-	
RELEASE STAGE:	RELEASED		

