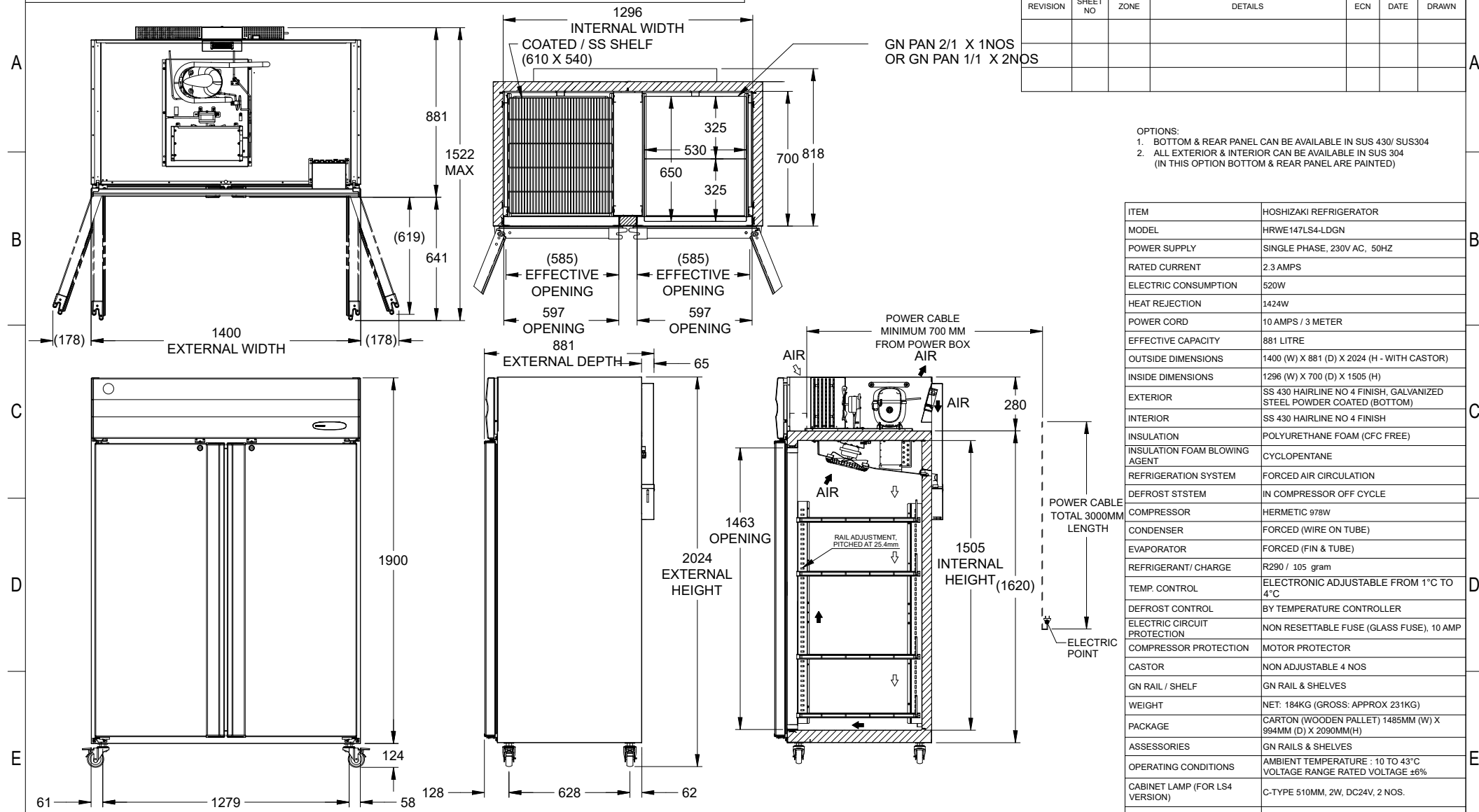


NOTE: COMPONENT AND ASSEMBLY MUST BE COMPLIANT TO APPLICABLE RECENT ROHS DIRECTIVES.

CHANGE NOTE						
REVISION	SHEET NO	ZONE	DETAILS	ECN	DATE	DRAWN



- OPTIONS:  
 1. BOTTOM & REAR PANEL CAN BE AVAILABLE IN SUS 430/ SUS304  
 2. ALL EXTERIOR & INTERIOR CAN BE AVAILABLE IN SUS 304 (IN THIS OPTION BOTTOM & REAR PANEL ARE PAINTED)

ITEM	HOSHIZAKI REFRIGERATOR
MODEL	HRWE147LS4-LDGN
POWER SUPPLY	SINGLE PHASE, 230V AC, 50HZ
RATED CURRENT	2.3 AMPS
ELECTRIC CONSUMPTION	520W
HEAT REJECTION	1424W
POWER CORD	10 AMPS / 3 METER
EFFECTIVE CAPACITY	881 LITRE
OUTSIDE DIMENSIONS	1400 (W) X 881 (D) X 2024 (H - WITH CASTOR)
INSIDE DIMENSIONS	1296 (W) X 700 (D) X 1505 (H)
EXTERIOR	SS 430 HAIRLINE NO 4 FINISH, GALVANIZED STEEL POWDER COATED (BOTTOM)
INTERIOR	SS 430 HAIRLINE NO 4 FINISH
INSULATION	POLYURETHANE FOAM (CFC FREE)
INSULATION FOAM BLOWING AGENT	CYCLOPENTANE
REFRIGERATION SYSTEM	FORCED AIR CIRCULATION
DEFROST STSTEM	IN COMPRESSOR OFF CYCLE
COMPRESSOR	HERMETIC 978W
CONDENSER	FORCED (WIRE ON TUBE)
EVAPORATOR	FORCED (FIN & TUBE)
REFRIGERANT/ CHARGE	R290 / 105 gram
TEMP. CONTROL	ELECTRONIC ADJUSTABLE FROM 1°C TO 4°C
DEFROST CONTROL	BY TEMPERATURE CONTROLLER
ELECTRIC CIRCUIT PROTECTION	NON RESETTABLE FUSE (GLASS FUSE), 10 AMP
COMPRESSOR PROTECTION	MOTOR PROTECTOR
CASTOR	NON ADJUSTABLE 4 NOS
GN RAIL / SHELF	GN RAIL & SHELVES
WEIGHT	NET: 184KG (GROSS: APPROX 231KG)
PACKAGE	CARTON (WOODEN PALLET) 1485MM (W) X 994MM (D) X 2090MM(H)
ASSESSORIES	GN RAILS & SHELVES
OPERATING CONDITIONS	AMBIENT TEMPERATURE : 10 TO 43°C VOLTAGE RANGE RATED VOLTAGE ±6%
CABINET LAMP (FOR LS4 VERSION)	C-TYPE 510MM, 2W, DC24V, 2 NOS.
LAMP DRIVER (FOR LS4 VERSION)	ELECTRONIC DRIVER 20W

\*WE RESERVE THE RIGHT TO MAKE CHANGES IN SPECIFICATIONS AND DESIGN WITHOUT PRIOR NOTICE

- INSTALL THE PRODUCT PROPERLY IN ACCORDANCE WITH THE INSTRUCTIONS ON LOCATION, ELECTRICAL CONNECTIONS STATED IN THE INSTRUCTION MANUAL PROVIDED. ALLOW 10MM EXTRA SPACE AT THE INSTALLATION SITE TO MEET ANY INSTALLATION REQUIREMENTS (ADDITIONAL SPACING IS ALSO REQUIRED FOR PROPER AIR FLOW AND PIPE CONNECTIONS).
- THE HEAT REJECTION IS BASED ON THE REACHED PULL DOWN TEMPERATURE AT AMBIENT TEMPERATURE OF 43°C AND POWER SUPPLY OF 230VAC 50HZ. THE AMPERAGE AND ELECTRIC CONSUMPTION ARE BASED ON MEASUREMENT AT AMBIENT TEMPERATURE OF 43°C AND POWER SUPPLY OF 230VAC 50HZ.

THIS ASSEMBLY DRAWING IS FOR ILLUSTRATION PURPOSE. COMPONENTS, ASSEMBLY SEQUENCE MAY VARY DEPENDING UPON MANUFACTURING PRACTICES SPECIFIC TO MANUFACTURING LOCATIONS. REFER PROCESS WORK INSTRUCTIONS FOR MORE DETAILS ON ASSEMBLY. REFER SAP BOM FOR EXACT MATERIAL CONSUMPTION.

UNSPECIFIED TOLERANCES		SCALE: NTS	TITLE		DWG. NO.	REVISION
DIM	<6 6-30 30-120 120-400 400-1000 >1000	ALL DIMENSIONS ARE IN MM	REACH-IN REFRIGERATOR		0712744	A
TOL	±0.1 ±0.2 ±0.3 ±0.5 ±0.8 ±1.2					
UNSPECIFIED TOL. ON ANGLE ±0.5		DRAWN BY	MODEL		SAP CODE	
		KIRAN	HRWE147LS4-LDGN			
		CHECKED BY	RELEASE DATE	SHEET		
		PRATAP	27.08.2024	1 OF 2		
REFERENCE STANDARD		APPROVED BY	RELEASE STAGE:			
		PRATAP	RELEASED			