

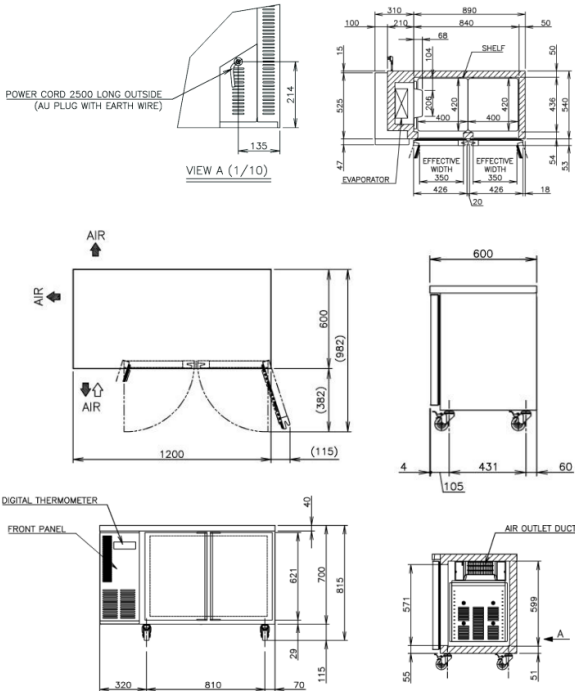


## PRODUCT FEATURES

- Complete with stainless steel top.
- Standard with 4 shelves / 2 doors.
- Programmable electronic controller and display.
- 2 years parts and labour warranty.
- Comes standard with 4 x lockable (115 mm) castors (not legs).
- Optional Adjustable legs 150 - 180mm (Sold separately).



## TECHNICAL DRAWING



## PRODUCT SPECIFICATION

Interior	Stainless Steel, ABS Plastic (Doors)
Exterior	Stainless Steel, Galvanized Steel (Rear/Bottom) ABS plastic (Top & Bottom on Door)
Max Storage Capacity	231L
Temperature Control	Microprocessor(Digital Temp Indication) Adjustable from -6 to 12°C
Evaporator	Fin & Tube type
Outside Dimensions	1200mm (W)x 600mm (D) x 815mm (H)
Inside Dimensions	840mm (W) x 436mm (D) x 599mm (H)
Refrigeration System	Forced Air Circulation
Weight Net/ Gross (kg)	71/ 76
AC Supply Voltage	1 PHASE 220-240V 50Hz /10amp Plug
Amperage	Rated: 2.0A
Refrigerant	R134A
Operating Conditions	Ambient Temp.: 5-38°C Voltage Range: Rated Voltage ±6%

## INSTALLATION REQUIREMENTS

- Equipment should not be located in direct sunlight or next to sources of high heat.\*
- Allow at least 50 cm clearance between the front panel air inlet/outlet and the wall or other equipment for proper air circulation.\*

\*Refer to manual for full installation & maintenance requirements.



For free 12 month extended warranty, register online within 4 weeks of purchase date.  
[hoshizaki.com.au](http://hoshizaki.com.au)

