



CRESCENT CUBER

KM-590DJ(S)
KM-590DWJ(S)

PARTS LIST

[HSH][HPH][HTW][HS][HMY][HID][HTH][HHK][HLP]

F137

F137-C101,F137-C301,F137-C401,F137-C002,F137-D001,
F137-D002,F137-D101,F137-D201,F137-D301,F137-D401

F151

F151-C101,F151-C401,F151-D001,F151-D101,F151-D401

J-1 JUN. 2019

J-2 NOV. 2019

M-1 JAN. 2022

N-1 JUL. 2023

List of Specifications 规格列表

型号 MODEL	产品代码 MODEL NUMBER	规格 SPEC
KM-590DJ	F137	Standard
KM-590DJ	F137-C002	HTH
KM-590DJ	F137-C101	HSH
KM-590DJ	F137-C301	HPH
KM-590DJ	F137-C401	HTW
KM-590DJ-S	F137-D001	HS,HMY,HID,HTH,HHK
KM-590DJ-S	F137-D002	HTH
KM-590DJ-S	F137-D101	HSH
KM-590DJ-S	F137-D201	HLP
KM-590DJ-S	F137-D301	HPH
KM-590DJ-S	F137-D401	HTW
KM-590DWJ	F151	HS,HMY,HID,HTH,HHK
KM-590DWJ	F151-C101	HSH
KM-590DWJ	F151-C401	HTW
KM-590DWJ-S	F151-D001	HS,HMY,HID,HTH,HHK
KM-590DWJ-S	F151-D101	HSH
KM-590DWJ-S	F151-D401	HTW

辅助编码

AUXILIARY CODE

U - 1

辅助编码序列号的前两个字符，第一个字符表示生产年份，年份是按字母顺序依次编码。字母顺序（有时存在字母跳跃）取决于UL认证规则、生产、产品型号。请参考铭牌标签的辅助编码和生产年份进行对应。

The auxiliary code is the first two characters in the serial number. The first character indicates the production year. Years progress or regress in alphabetical order. The series of letters and skipped letters depend on UL listing, production, and model. See the auxiliary code(s) and corresponding year(s) on the front cover.

第二个字符表示在同一生产年份内产品发生了显著的变化，从“1”开始，依次进行变化；如果在1年中产品没有显著的变化，此号码从“0”开始。

The second character indicates significant part changes within the same year. Base is "1" and this number advances for each change.

If there is no significant part change at the turn of the year, this number starts from "0."

紧固件零件编码

FASTENER PART NUMBER

螺丝

SCREWS

F S T 0 3 0 6 F 0



*1 材质 Material

F: 铁 Steel
S: 奥氏体不锈钢 Austenitic stainless steel
M: 马氏体不锈钢 Martensitic stainless steel
B: 铜合金 Copper alloy
P: 聚碳酸酯 Polycarbonate
N: 聚酰胺 Polyamide
V: PVC
A: ABS
X: 聚缩醛 Polyacetal
L: 铝 Aluminum

螺母 & 垫片

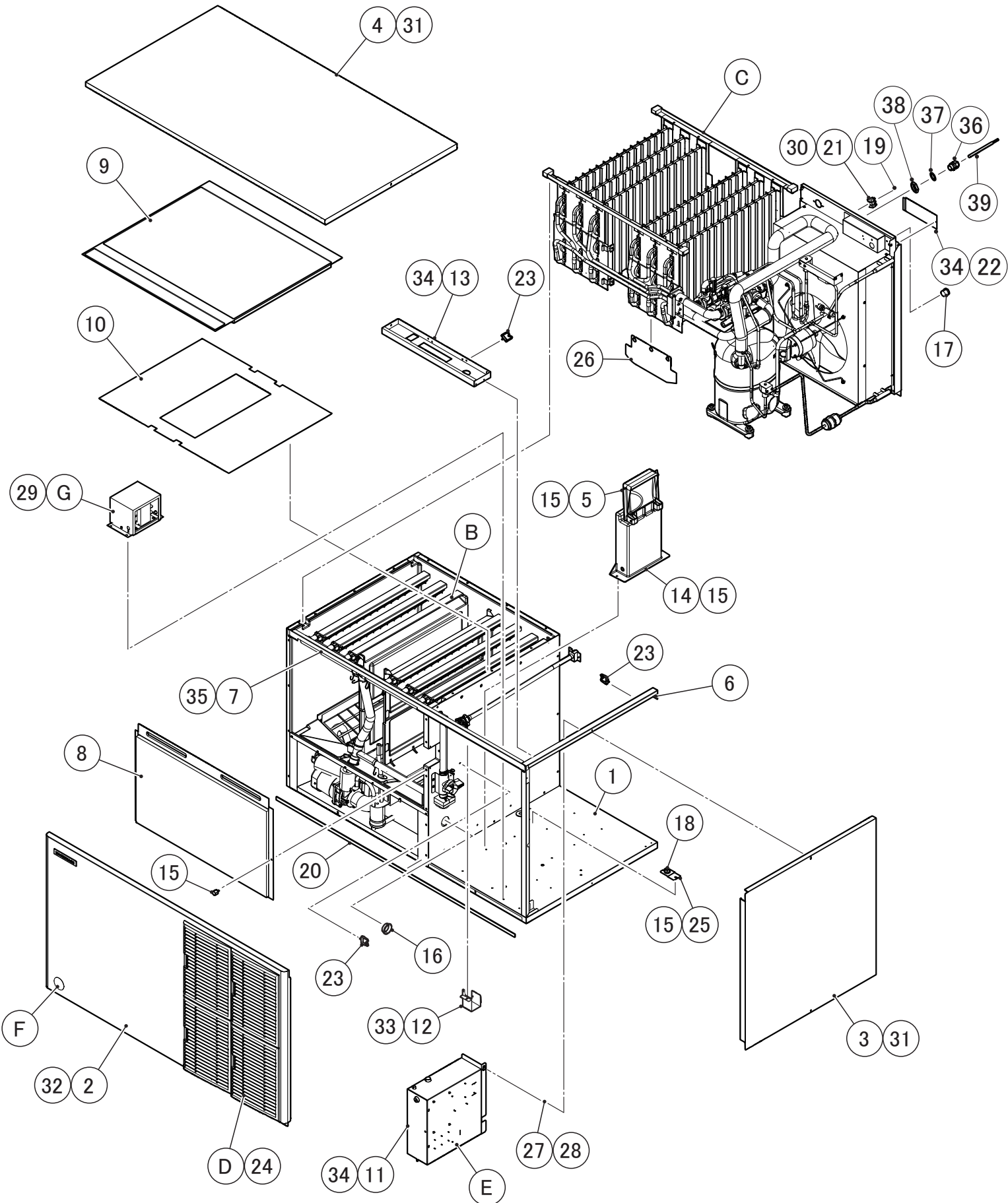
NUTS & WASHERS

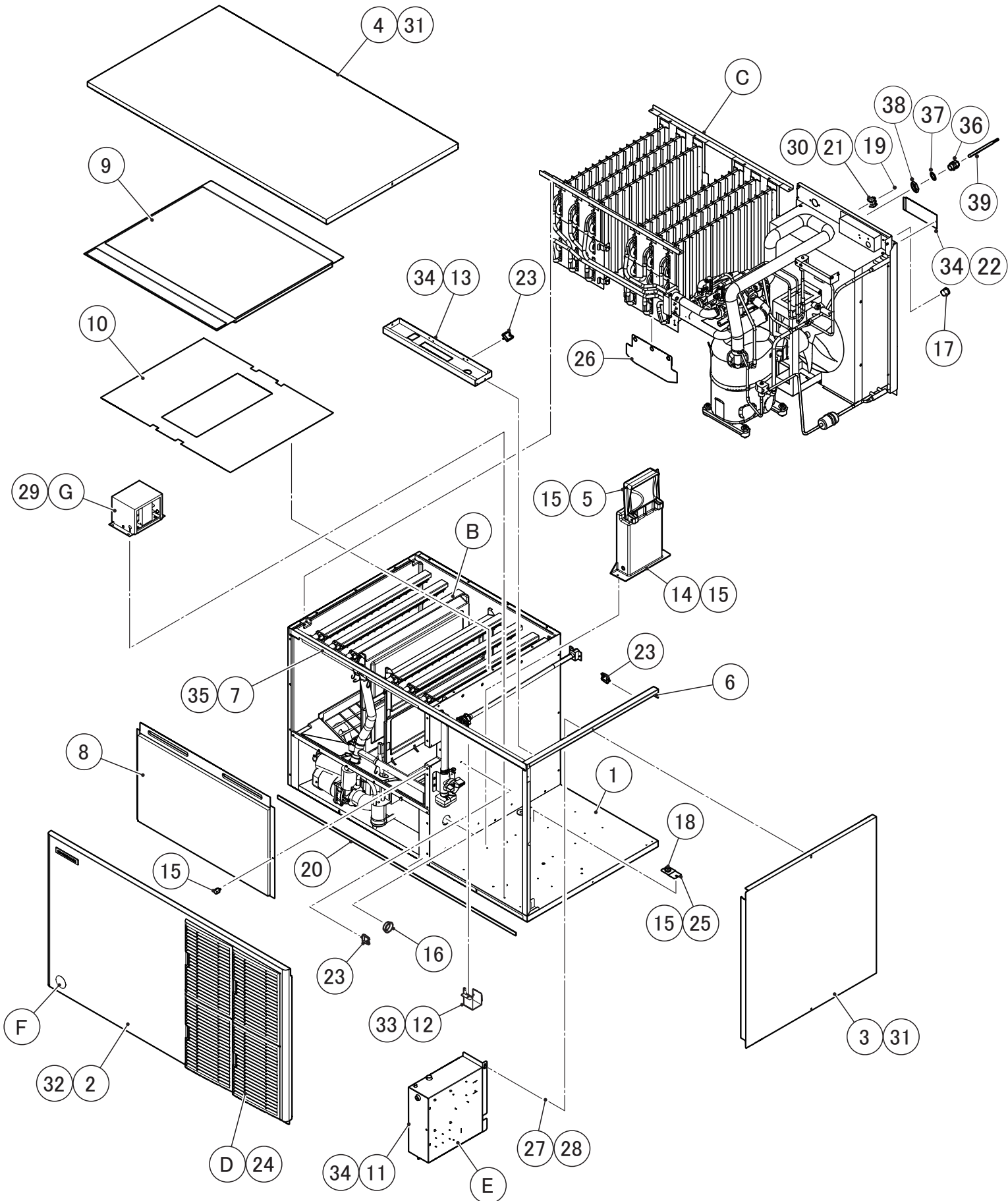
F W S P 0 5 S 0



*2 描述 Description

首字母 First letter
S: 机器螺丝 Machine screw
T: 自攻螺丝 Tapping screw
M: 木螺丝 Wood screw
B: 螺栓 Bolt
W: 垫片 Washer
N: 螺母 Nut





型号/MODEL: KM-590DJ		标题/TITLE: A. ICE CUBER ASSY 制冰组件							
序号 INDEX NO.	部品名称 DESCRIPTION	材质或型号MATERIAL OR MODEL NUMBER	部品序号 PART NUMBER	需求数量 REQ'D NUMBER					
				J-1	J-2 M-0	M-1 N-0	N-1 and later		
B	WATER CIRCUIT 水回路	F137,F137-C101,F137-C002 F151,F151-C101,F137-D001 F137-D002,F137-D101 F137-D201,F151-D001 F151-D101	127979A01	1	1	1	1		
		F137-C301,F137-C401 F151-C401,F137-D301 F137-D401,F151-D401	127979A02	1	1	1	1		
C	REFRIGERATION CIRCUIT 冷冻回路	F137,F137-C101	127980A01	1	1	-	-		
		F137-C301,F137-C401	127980A02	-	1	-	-		
		F137-D001,F137-D101 F137-D201,F137,F137-C101 F137-C002,F137-D002	127980A03	-	1	1	1		
		F137-D301,F137-D401 F137-C301,F137-C401	127980A04	-	1	1	1		
		F151,F151-C101	128756A01	1	1	-	-		
		F151-C401	128756A02	1	1	-	-		
		F151-D001,F151-D101 F151,F151-C101	128756A03	-	1	1	1		
		F151-D401,F151-C401	128756A04	-	1	1	1		
D	LOUVER FILTER AY 通风窗过滤组件	F137,F137-C002,F137-C101 F137-C301,F137-C401	277614A02	1	1	1	1		
E	CONTROL BOX AY 控制盒组件	F137,F137-C002,F137-C101 F137-D001,F137-D002 F137-D101,F137-D201	277629A01	1	1	1	1		
		F137-C301,F137-C401 F137-D301,F137-D401	277629A02	-	1	1	1		
		F151,F151-C101 F151-D001,F151-D101	277629A03	1	1	1	1		
		F151-C401,F151-D401	277629A04	1	1	1	1		
F	LABEL LOCATION 标签位置	F137,F137-C002	277630A01	1	1	1	1		
		F137-C101	277630A02	1	1	1	1		
		F137-C301	277630A03	-	1	1	1		
		F137-C401	277630A05	-	1	1	1		
		F137-D001,F137-D002	277630A06	-	1	1	1		

型号/MODEL: KM-590DJ 标题/TITLE: A. ICE CUBER ASSY 制冰组件								
序号 INDEX NO.	部品名称 DESCRIPTION	材质或型号MATERIAL OR MODEL NUMBER	部品序号 PART NUMBER	需求数量 REQ'D NUMBER				
				J-1	J-2 M-0	M-1 N-0	N-1 and later	
		F137-D101	277630A07	-	1	1	1	
		F137-D201	277630A09	-	1	1	1	
		F137-D301	277630A08	-	1	1	1	
		F137-D401	277630A10	-	1	1	1	
		F151	280454A01	1	1	1	1	
		F151-C101	280454A02	1	1	1	1	
		F151-C401	280454A05	1	1	1	1	
		F151-D001	280454A06	-	1	1	1	
		F151-D101	280454A07	-	1	1	1	
		F151-D401	280454A10	-	1	1	1	
G	TRANSFORMER BOX AY 变压器盒子组件		389235A01	1	1	1	1	
L	ACCESSORIES 附件	F137,F137-C002 F137-C301,F151 F137-D001,F137-D002 F137-D301,F151-D001	A03766-01	1	1	1	1	
		F137-C101,F151-C101 F137-D101,F151-D101	A03852-01	1	1	1	1	
		F137-C401,F137-D401 F151-C401,F151-D401	A03924-01	1	1	1	1	
		F137-D201	A04090-01	1	1	1	1	
1	EVAP. CASE 蒸发器保温层	F137,F137-C002,F137-C101 F137-C301,F137-C401 F151,F151-C101,F151-C401	127978G01	1	1	1	1	
		F137-D001,F137-D002 F137-D101,F137-D201 F137-D301,F137-D401 F151-D001,F151-D101 F151-D401	127978G02	-	1	1	1	
2	FRONT PANEL AY 前面板组件	F137,F137-C002,F137-C101 F137-C301 F137-C401 F137-D001,F137-D002 F137-D101,F137-D201 F137-D301,F137-D401	391992G01	1	1	1	1	
		F151,F151-C101,F151-C401 F151-D001,F151-D101 F151-D401	391992G02	1	1	1	1	

型号/MODEL: KM-590DJ

标题/TITLE: A. ICE CUBER ASSY
制冰组件

序号 INDEX NO.	部品名称 DESCRIPTION	材质或型号MATERIAL OR MODEL NUMBER	部品序号 PART NUMBER	需求数量 REQ'D NUMBER				
				J-1	J-2 M-0	M-1 N-0	N-1 and later	
3	SIDE PANEL (R) 侧板 (R)		277626G01	1	1	1	1	
4	TOP PANEL AY 顶板组件		391991G01	1	1	1	1	
5	BIN CONTROL 储冰箱控制		2A8598G01	1	1	1	1	
6	SIDE FRAME (A) 侧面框	F137,F137-C002,F137-C101 F137-C301,F137-C401 F151,F151-C101,F151-C401	277628G01	1	1	1	1	
		F137-D001,F137-D002 F137-D101,F137-D201 F137-D301,F137-D401 F151-D001,F151-D101 F151-D401	277628G02	1	1	1	1	
7	FRONT PANEL BRACKET 前面框支架		389258M01	1	1	1	1	
8	FRONT INSULATION 前部保温		389259G01	1	1	1	1	
9	TOP INSULATION 顶部保温		389260G01	1	1	1	1	
10	SPACER 垫片		389261P01	1	1	1	1	
11	CONTROL BOX COVER 控制盒罩子		389262M01	1	1	1	1	
12	WATER VALVE BRACKET 水阀支架		389263M01	1	-	-	-	
			391606M01	-	1	1	1	
13	FRONT FRAME (A) 前面框 (A)		389264M01	1	1	1	1	
14	MOUNTING BRACKET 安装支架	F137, F137-C002,F137-C301 F137-C401,F137-D001 F137-D002,F137-D201 F137-D301,F137-D401 F151, F151-C401 F151-D001, F151-D401	389143P01	1	1	1	1	
		F137-C101, F137-D101 F151-C101, F151-D101	3C0481M01	-	-	1	1	
15	THUMBSCREW 指旋螺丝		415949G12	5	5	5	5	
16	BUSHING 衬套		420470-06	2	2	2	2	
17	BUSHING 衬套		420472-05	1	1	1	1	

型号/MODEL: **KM-590DJ**

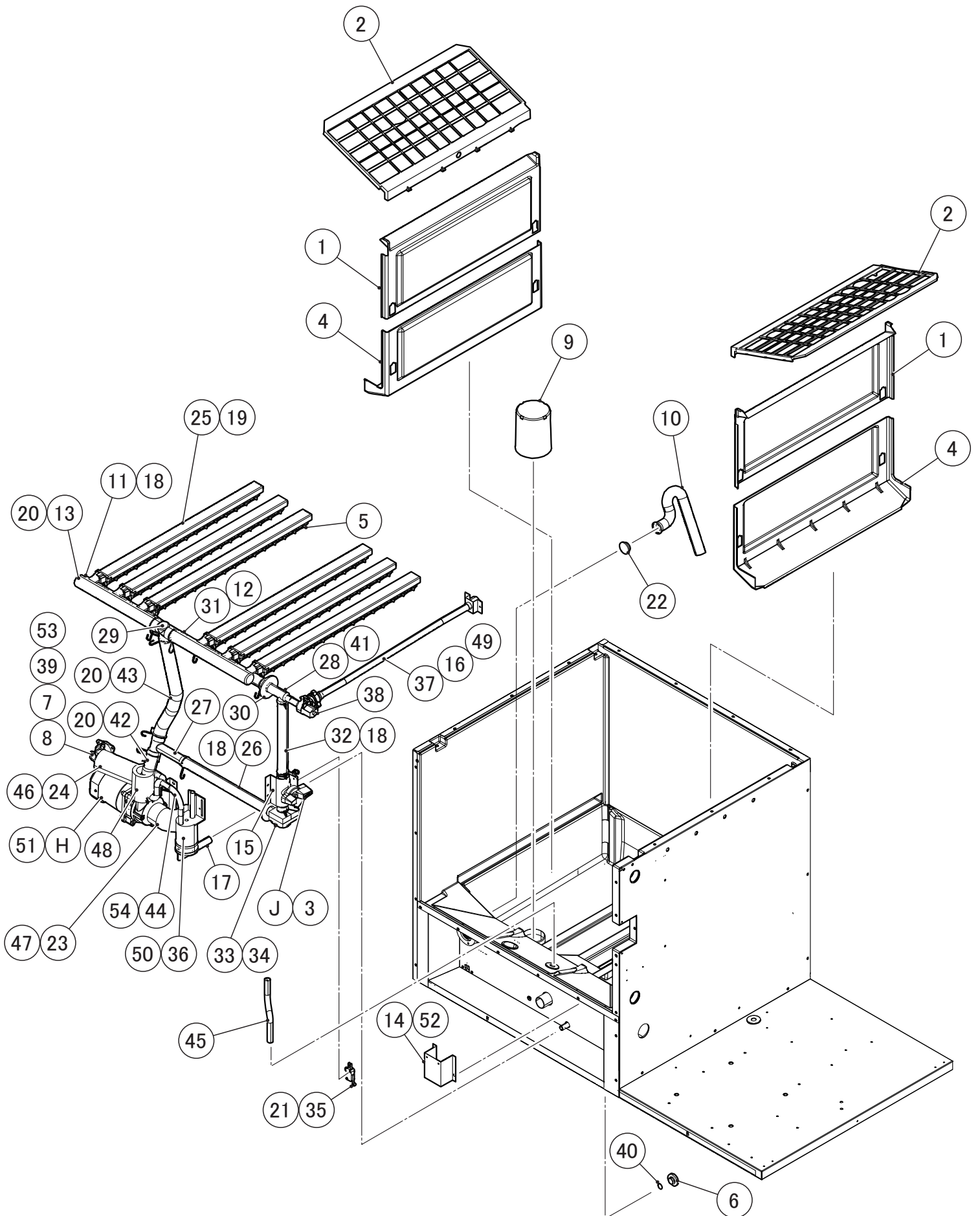
标题/TITLE: **A. ICE CUBER ASSY**
制冰组件

序号 INDEX NO.	部品名称 DESCRIPTION	材质或型号MATERIAL OR MODEL NUMBER	部品序号 PART NUMBER	需求数量 REQ'D NUMBER				
				J-1	J-2 M-0	M-1 N-0	N-1 and later	
18	CAPILLARY RING 毛细环		425307-02	1	1	-	-	
			4C0309Z01	-	-	1	1	
19	SCREW - GROUNDING 螺丝-接地		433304-02	1	1	-	-	
			FST0508S0	-	-	1	1	
20	GASKET 密封条		4A0808L02	1	-	-	-	
			127977Z01	-	1	1	1	
21	TERMINAL BLOCK 接线端子		4A1026-01	1	1	1	1	
22	JUNCTION BOX COVER 接线盒罩子		485139M01	1	1	1	1	
23	CLAMP 夹子		P05316-01	9	9	-	-	
			427902-05	-	-	8	8	
			427902-02	-	-	1	1	
24	PUSH RETAINER 卡扣		4A2414-01	12	12	12	12	
25	GROMMET RETAINER 环护圈		485140M01	1	1	1	1	
26	SPLASH GUARD 挡板		485141P01	2	2	2	2	
27	TAPER COLLAR 锥环		4H0171-01	1	1	1	1	
28	FLAT HEAD T2 SCREW T2平头螺丝		470417-02	1	1	1	-	
29	HEX HEAD BOLT (SPRING WASHER AND FLAT WASHER) 六角螺栓(弹簧垫圈和平垫圈)		FBK0512S0	4	4	4	4	
30	PAN HEAD MACHINE SCREW 盘头机螺丝		FSP0316S0	2	2	2	2	
31	TRUSS HEAD SCREW 桁架头螺丝	F137,F137-C002,F137-C101 F137-C301,F137-C401,F151 F151-C101,F151-C401	FST0408S0	3	3	3	3	
		F137-D001,F137-D002 F137-D101,F137-D201 F137-D301,F137-D401 F151-D001,F151-D101 F151-D401	FST0408S0	-	7	7	7	

型号/MODEL: KM-590DJ

标题/TITLE: A. ICE CUBER ASSY
制冰组件

序号 INDEX NO.	部品名称 DESCRIPTION	材质或型号MATERIAL OR MODEL NUMBER	部品序号 PART NUMBER	需求数量 REQ'D NUMBER				
				J-1	J-2 M-0	M-1 N-0	N-1 and later	
32	TRUSS HEAD MACHINE SCREW 桁架头机械螺丝		FST0416S0	2	2	2	2	
33	T2 TRUSS HEAD SCREW T2桁架头螺丝		FT20408M0	1	1	1	1	
34	T2 TRUSS HEAD SCREW T2桁架头螺丝	F137,F137-C002,F137-C101 F137-C301,F137-C401,F151 F151-C101,F151-C401	FT20408F0	10	10	10	13	
		F137-D001,F137-D002 F137-D101,F137-D201 F137-D301,F137-D401 F151-D001,F151-D101 F151-D401	FT20408F0	-	6	6	9	
35	T2 TRUSS HEAD SCREW T2桁架头螺丝		FT20412F0	2	2	-	-	
			FT20408F0	-	-	2	2	
36	CABLE CLAMP 电缆夹	F137-C101,F137-D101 F137-D201,F151-C101 F151-D101	C05855-01	1	1	1	1	
37	WASHER 垫圈	F137-C101,F137-D101 F137-D201,F151-C101 F151-D101	C05855F02	1	1	1	1	
38	LOCK NUT 锁紧接头	F137-C101,F137-D101 F137-D201,F151-C101 F151-D101	C05855F01	1	1	1	1	
39	POWER CORD 电源线	F137-C101,F137-D101 F151-C101,F151-D101	P05715-01	1	1	1	1	
		F137-D201	P05901-01	1	1	1	1	



型号/MODEL: **KM-590DJ**

标题/TITLE: **B. WATER CIRCUIT**
水回路

序号 INDEX NO.	部品名称 DESCRIPTION	材质或型号 MATERIAL OR MODEL NUMBER	部品序号 PART NUMBER	需求数量 REQ'D NUMBER				
				J-1	J-2 M-0	M-1 and later		
H	PUMP MOTOR AY 泵马达组件	F137,F137-C002 F137-C101,F137-D001 F137-D002,F137-D101 F137-D201 F151,F151-C101 F151-D001,F151-D101	277640A01	1	1	1		
		F137-C301,F137-C401 F137-D301,F137-D401 F151-C401,F151-D401	277640A02	-	1	1		
J	BALL VALVE AY 球阀组件		485124A01	1	1	1		
1	SEPARATOR (A) 隔板 (A)		213622-01	2	2	2		
2	CUBE GUIDE 导冰板		214243-01	2	2	2		
3	HANDLE 把手		277512P01	1	1	1		
4	SEPARATOR (B) 隔板 (B)		277522P01	2	2	2		
5	SPRAY GUIDE 散水管导板		277513P01	6	6	6		
6	DRAIN 排水		389148P01	1	1	1		
7	SPRING 弹簧		322110-01	1	1	-		
			3C0444M01	-	-	1		
8	VALVE HOUSING - DRAIN 阀壳-排水		389149P01	1	1	1		
9	OVERFLOW CAP 溢流塞子		389150P01	1	1	1		
10	DRAIN HOSE 排水软管		389155R01	1	1	1		
11	DISTRIBUTOR HOSE (A) 分流软管 (A)		389254R01	1	1	1		
12	DISTRIBUTOR HOSE (B) 分流软管 (B)		389254R02	1	1	1		
13	DISTRIBUTOR HOSE (C) 分流软管 (C)		389156R01	2	2	2		
14	FLOW SWITCH BRACKET 流量开关支架		389275M01	1	1	1		
15	VALVE HOLDER 阀支架		389160M01	1	1	1		

型号/MODEL: **KM-590DJ**

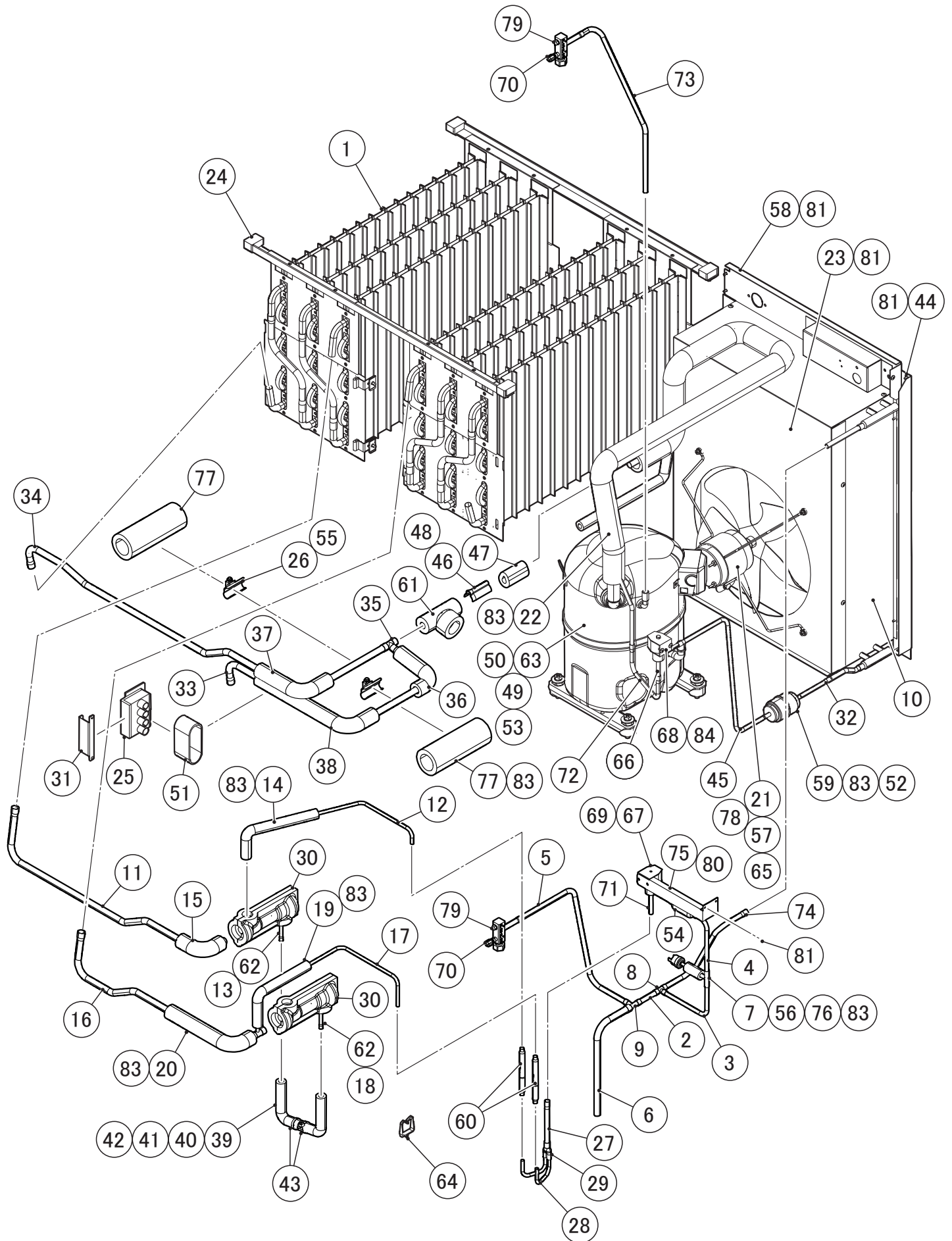
标题/TITLE: **B. WATER CIRCUIT**
水回路

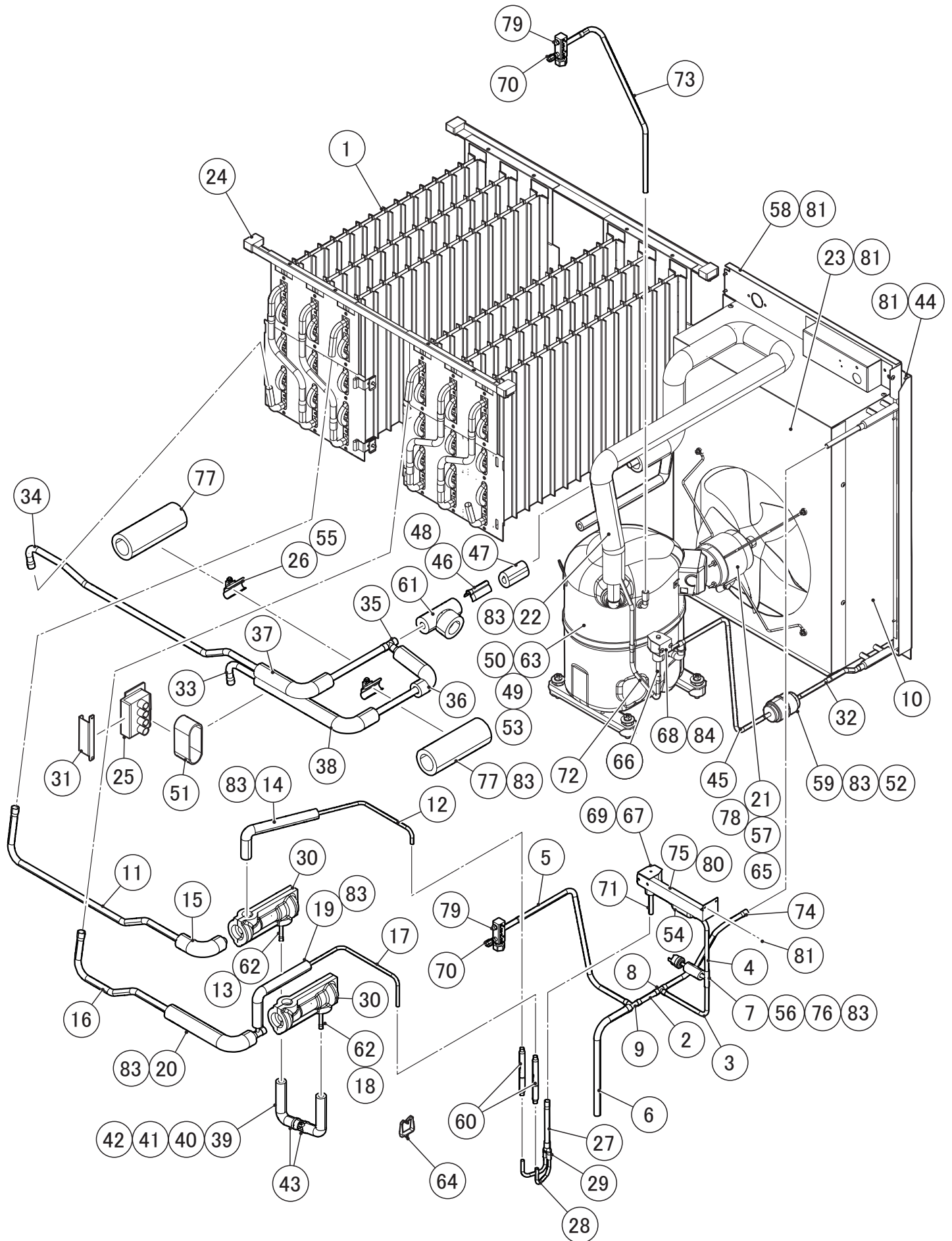
序号 INDEX NO.	部品名称 DESCRIPTION	材质或型号 MATERIAL OR MODEL NUMBER	部品序号 PART NUMBER	需求数量 REQ'D NUMBER				
				J-1	J-2 M-0	M-1 and later		
16	RUBBER GASKET 橡胶密封条		413854-03	1	1	1		
17	CONNECTOR - FLOAT SWITCH 接头-浮子开关		389703R02	1	1	1		
18	HOSE CLAMP 软管夹		P05613-03	9	9	9		
19	HOSE CLAMP 软管夹		P05613-07	6	6	6		
20	HOSE CLAMP 软管夹		P05613-09	6	6	6		
21	T2(S) FLANGED PAN HEAD SCREW T2 (S) 法兰盘头螺丝		431415-02	2	2	2		
22	VALVE SEAT 阀座		485074R01	1	1	1		
23	HOSE (A) 软管 (A)		435091-01	1	1	1		
24	HOSE (B) 软管 (B)		485117R01	1	1	1		
25	SPRAY TUBE 散水管		437049G01	6	6	6		
26	BYPASS HOSE 旁通软管		485118R01	1	1	1		
27	DISTRIBUTOR (C) 分流器 (C)		485071P01	1	1	1		
28	DISTRIBUTOR (B) 分流器 (B)		485072P01	1	1	1		
29	DISTRIBUTOR (A) 分流器 (A)		485073P01	1	1	1		
30	FLANGE 法兰		485111R02	1	1	1		
31	JOINT PIPE 接头管		439297-01	1	1	1		
32	JOINT HOSE 接头软管		485119R01	1	1	1		
33	CORNER INSULATION (A) 角部保温 (A)		485122Z01	1	1	1		
34	CORNER INSULATION (B) 角部保温 (B)		485123Z01	1	1	1		
35	MICRO SWITCH 微动开关		4A2546-01	1	1	-		
			C06238-01	-	-	1		

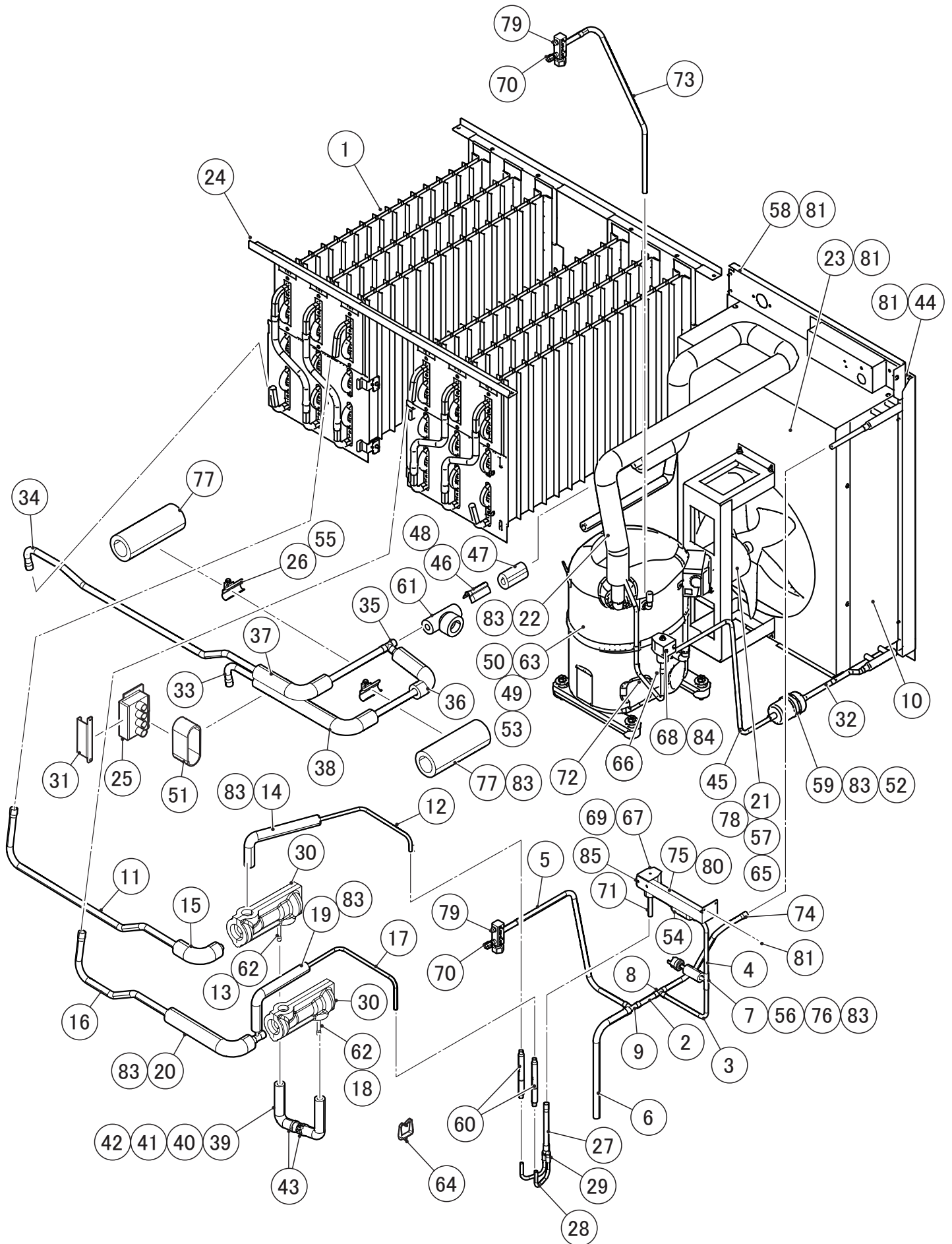
型号/MODEL: **KM-590DJ**

标题/TITLE: **B. WATER CIRCUIT**
水回路

序号 INDEX NO.	部品名称 DESCRIPTION	材质或型号 MATERIAL OR MODEL NUMBER	部品序号 PART NUMBER	需求数量 REQ'D NUMBER				
				J-1	J-2 M-0	M-1 and later		
36	FLOAT SWITCH 浮子开关		4A3624-01	1	1	-		
			P05902-01	-	-	1		
37	WATER SUPPLY PIPE 供水管		HS-0242	1	1	1		
38	WATER VALVE 水阀		4A5251-02	1	-	-		
			3U0111-01	-	1	1		
39	O-RING O型圈		7611-G035	1	1	1		
40	O-RING O型圈		7611-P015	1	1	1		
41	PVC Hose - SOFT PVC软管-软		HE1216040	1	-	-		
			H11215030	-	1	1		
42	PVC Hose - SOFT PVC软管-软		H12632150	1	1	1		
43	PVC Hose - SOFT PVC软管-软		H12632390	1	1	1		
44	Si Hose 硅胶管		H11014450	1	1	1		
45	Si Hose 硅胶管		H11014150	1	1	1		
46	INSULATION TUBE 绝缘套管		H73555150	1	1	1		
47	INSULATION TUBE 绝缘套管		H73555120	1	1	1		
48	INSULATION TUBE 绝缘套管		H73555080	1	1	1		
49	TRUSS HEAD SCREW 桁架头螺丝		FST0408S0	5	5	5		
50	TRUSS HEAD SCREW 桁架头螺丝		FST0410S0	2	2	2		
51	TRUSS HEAD SCREW 桁架头螺丝		FST0508S0	2	2	2		
52	T2 TRUSS HEAD SCREW T2 桁架头螺丝		FT20408S0	4	4	4		
53	TRUSS HEAD TAPPING SCREW T2 T2桁架头自攻螺丝		FT20410S0	4	4	4		
54	SPRING 弹簧		435825-01	1	1	1		







型号/MODEL: KM-590DJ

标题/TITLE: C. REFRIGERATION CIRCUIT
冷冻回路

序号 INDEX NO.	部品名称 DESCRIPTION	材质或型号 MATERIAL OR MODEL NUMBER	部品序号 PART NUMBER	需求数量 REQ'D NUMBER				
				J-1 L-0	L-1 M-0	M-1 N-0	N-1 and later	
1	EVAPORATOR 蒸发器	F137,F137-C101,F137-C301 F137-C401	127982G01	1	1	-	-	
		F137-D001,F137-D002,F137-D101 F137-D201,F137-D301,F137-D401 F137,F137-C002 F137-C101,F137-C301,F137-C401	127982G02	-	1	1	1	
2	COPPER TUBE (B2) - HIGH SIDE 铜管 (B2)-高压侧	COPPER TUBE (B) - HIGH SIDE 277641G01 铜管 (B)-高压侧277641G01	277641M02	1	1	1	1	
3	COPPER TUBE (B3) - HIGH SIDE 铜管 (B3)-高压侧	COPPER TUBE (B) - HIGH SIDE 277641G01 铜管 (B)-高压侧277641G02	277641M03	1	1	1	1	
4	COPPER TUBE (B4) - HIGH SIDE 铜管 (B4)-高压侧	COPPER TUBE (B) - HIGH SIDE 277641G01 铜管 (B)-高压侧277641G03	277641M04	1	1	1	1	
5	COPPER TUBE (B5) - HIGH SIDE 铜管 (B5)-高压侧	COPPER TUBE (B) - HIGH SIDE 277641G01 铜管 (B)-高压侧277641G04	277641M05	1	1	1	1	
6	COPPER TUBE (B1) - HIGH SIDE 铜管 (B1)-高压侧	COPPER TUBE (B) - HIGH SIDE 277641G01 铜管 (B)-高压侧277641G05	277641M01	1	1	1	1	
7	TEE 三通	COPPER TUBE (B) - HIGH SIDE 277641G01 铜管 (B)-高压侧277641G06	420041-02	1	1	1	1	
8	TEE 三通	COPPER TUBE (B) - HIGH SIDE 277641G01 铜管 (B)-高压侧277641G07	436000-07	1	1	1	1	
9	TEE 三通	COPPER TUBE (B) - HIGH SIDE 277641G01 铜管 (B)-高压侧277641G08	436000-09	1	1	1	1	
10	CONDENSER 冷凝器		P05153-01	1	1	1	1	
11	COPPER TUBE (L1) - HOT GAS 铜管(L1)-热气	COPPER TUBE (L) - HOT GAS 277642G01 铜管(L)-热气277642G01	277642M01	1	1	1	1	
12	COPPER TUBE (L2) - HOT GAS 铜管(L2)-热气	COPPER TUBE (L) - HOT GAS 277642G01 铜管(L)-热气277642G02	277642M02	1	1	1	1	
13	TEE 三通	COPPER TUBE (L) - HOT GAS 277642G01 铜管(L)-热气277642G03	436000-10	1	1	1	1	
14	INSULATION TUBE 绝缘套管	COPPER TUBE (L) - HOT GAS 277642G01 铜管(L)-热气277642G04	H71020200	1	1	1	1	
15	INSULATION TUBE 绝缘套管	COPPER TUBE (L) - HOT GAS 277642G01 铜管(L)-热气277642G05	H71630100	1	1	1	1	
16	COPPER TUBE (R1) - HOT GAS 铜管(R1)-热气	COPPER TUBE (R) - HOT GAS 277643G01 铜管(R)-热气 277643G01	277643M01	1	1	1	1	

型号/MODEL: KM-590DJ

标题/TITLE: C. REFRIGERATION CIRCUIT
冷冻回路

序号 INDEX NO.	部品名称 DESCRIPTION	材质或型号 MATERIAL OR MODEL NUMBER	部品序号 PART NUMBER	需求数量 REQ'D NUMBER				
				J-1 L-0	L-1 M-0	M-1 N-0	N-1 and later	
17	COPPER TUBE (R2) - HOT GAS 铜管(R2)-热气	COPPER TUBE (R) - HOT GAS 277643G01 铜管(R)-热气 277643G02	277643M02	1	1	1	1	
18	TEE 三通	COPPER TUBE (R) - HOT GAS 277643G01 铜管(R)-热气 277643G03	436000-10	1	1	1	1	
19	INSULATION TUBE 绝缘套管	COPPER TUBE (R) - HOT GAS 277643G01 铜管(R)-热气 277643G04	H71020200	1	1	1	1	
20	INSULATION TUBE 绝缘套管	COPPER TUBE (R) - HOT GAS 277643G01 铜管(R)-热气 277643G05	H71630210	1	1	1	1	
21	BRACKET - FAN MOTOR MOUNT 支架-风扇电机安装		2A9618-02	1	1	1	1	
			1C0571M01	-	-	-	1	
22	HEAT EXCHANGER 热交换		277644G01	1	1	1	1	
23	SHROUD AY 护罩组件		277645G01	1	1	1	1	
24	FRAME SEAL 框架密封		323925-01	4	4	4	4	
25	INSULATED RUBBER TUBE AY 绝缘胶管 组件		389244G01	1	1	1	1	
26	HOLDER - EXP. VALVE 3/8 支架-膨胀阀3/8		3C0058M01	2	2	2	2	
27	COPPER TUBE (A) - HOT GAS 铜管(A)-热气	COPPER TUBE (R) - HOT GAS 389277G01 铜管(R)-热气 389277G01	389277M01	1	1	1	1	
28	COPPER TUBE (B) - HOT GAS 铜管(B)-热气	COPPER TUBE (R) - HOT GAS 389277G01 铜管(R)-热气 389277G02	389277M02	2	2	2	2	
29	Y JOINT Y 接头		4A0159-01	1	1	-	-	
			C06280-01	-	-	1	1	
30	INSULATION - EXP.V 膨胀阀隔热材		3A0944-01	2	2	2	2	
31	INSULATION - HOLDER 保温-支架		389427M01	1	1	1	1	
32	TUBE - STRAIGHT 管子-直		389218M04	1	-	-	-	
			389218M05	-	1	1	1	

型号/MODEL: KM-590DJ

标题/TITLE: C. REFRIGERATION CIRCUIT
冷冻回路

序号 INDEX NO.	部品名称 DESCRIPTION	材质或型号 MATERIAL OR MODEL NUMBER	部品序号 PART NUMBER	需求数量 REQ'D NUMBER				
				J-1 L-0	L-1 M-0	M-1 N-0	N-1 and later	
33	COPPER TUBE (A1) - LOW SIDE 铜管(A1) - 低压侧	COPPER TUBE (R) - LOW SIDE 389278G01 铜管(R) - 低压侧 389278G01	389278M01	1	1	1	1	
34	COPPER TUBE (A2) - LOW SIDE 铜管(A2) - 低压侧	COPPER TUBE (R) - LOW SIDE 389278G01 铜管(R) - 低压侧 389278G02	389278M02	1	1	1	1	
35	TEE 三通	COPPER TUBE (R) - LOW SIDE 389278G01 铜管(R) - 低压侧 389278G03	436000-03	1	1	1	1	
36	INSULATION TUBE 绝缘套管	COPPER TUBE (R) - LOW SIDE 389278G01 铜管(R) - 低压侧 389278G04	H71630140	1	1	1	1	
37	INSULATION TUBE 绝缘套管	COPPER TUBE (R) - LOW SIDE 389278G01 铜管(R) - 低压侧 389278G05	H71630180	1	1	1	1	
38	INSULATION TUBE 绝缘套管	COPPER TUBE (R) - LOW SIDE 389278G01 铜管(R) - 低压侧 389278G06	H71630300	1	1	1	1	
39	COPPER TUBE (A1) - EVAP. VALVE 铜管(A1) - EVAP 阀	COPPER TUBE (A1) - EVAP. VALVE 389279G01 铜管(A1) - EVAP 阀 389279G01	389279M01	1	1	1	1	
40	COPPER TUBE (A2) - EVAP. VALVE 铜管(A2) - EVAP 阀	COPPER TUBE (A1) - EVAP. VALVE 389279G01 铜管(A1) - EVAP 阀 389279G02	389279M02	1	1	1	1	
41	TEE 三通	COPPER TUBE (A1) - EVAP. VALVE 389279G01 铜管(A1) - EVAP 阀 389279G03	436000-01	1	1	1	1	
42	INSULATION TUBE 绝缘套管	COPPER TUBE (A1) - EVAP. VALVE 389279G01 铜管(A1) - EVAP 阀 389279G04	H71020140	1	1	1	1	
43	NYLON TIE 尼龙扎带	COPPER TUBE (A1) - EVAP. VALVE 389279G01 铜管(A1) - EVAP 阀 389279G05	7920-0010	2	2	2	2	
44	SIDE FRAME (B) 侧面框 (B)		389280M01	1	1	1	1	
45	COPPER TUBE - LINE VALVE 铜管-管路阀		389281M01	1	-	-	-	
			3C0056M01	-	1	-	-	
			3C0056M02	-	-	1	1	
46	HOLDER - THERMISTOR 支架-热敏电阻		427430-01	1	1	1	1	
47	INSULATION - THERMISTOR 绝缘-热敏电阻		485131Z01	1	1	1	1	
48	THERMISTOR 热敏电阻		429006-03	1	1	1	1	
49	SPACER 垫片		434921-01	4	4	4	4	

型号/MODEL: KM-590DJ

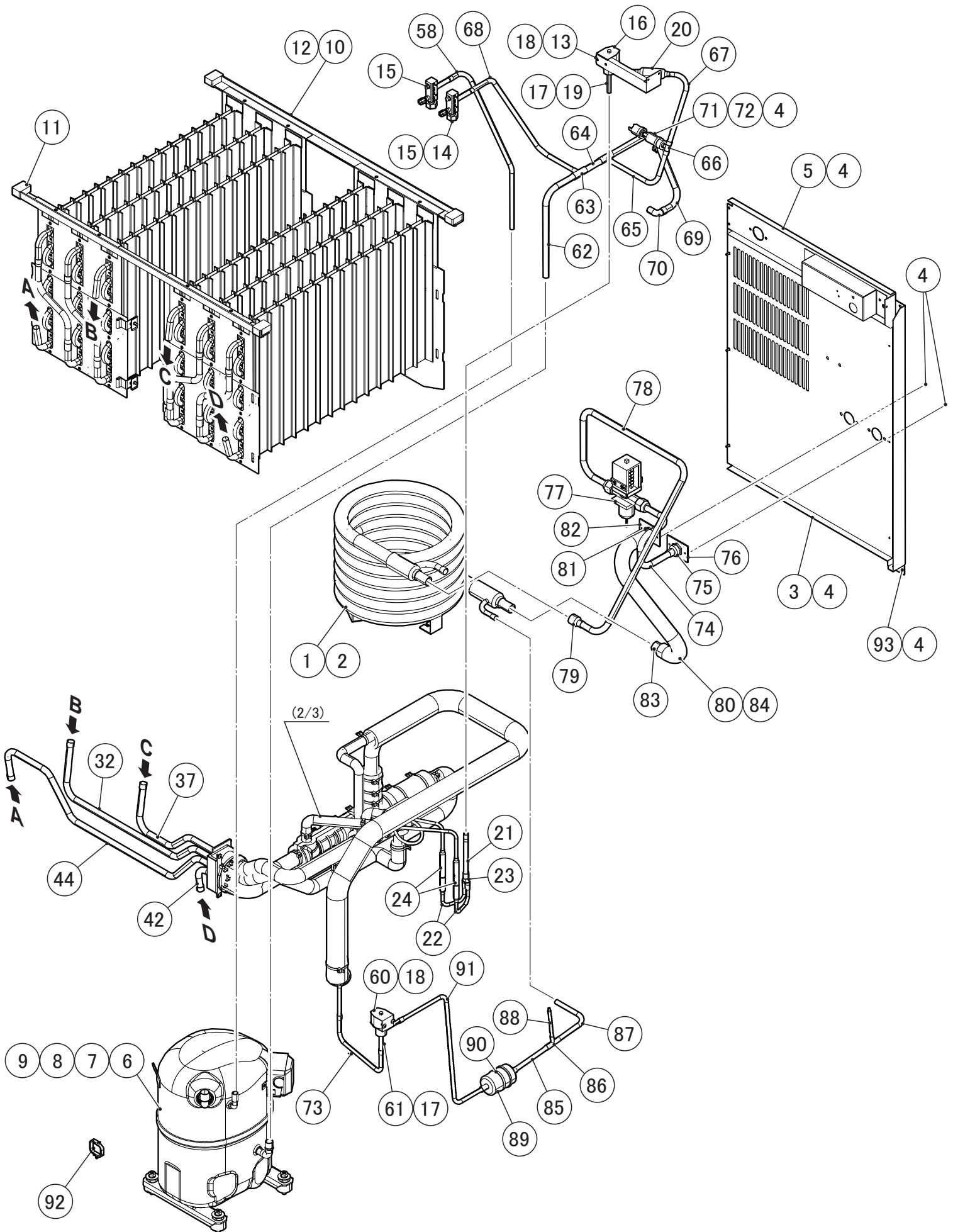
标题/TITLE: C. REFRIGERATION CIRCUIT
冷冻回路

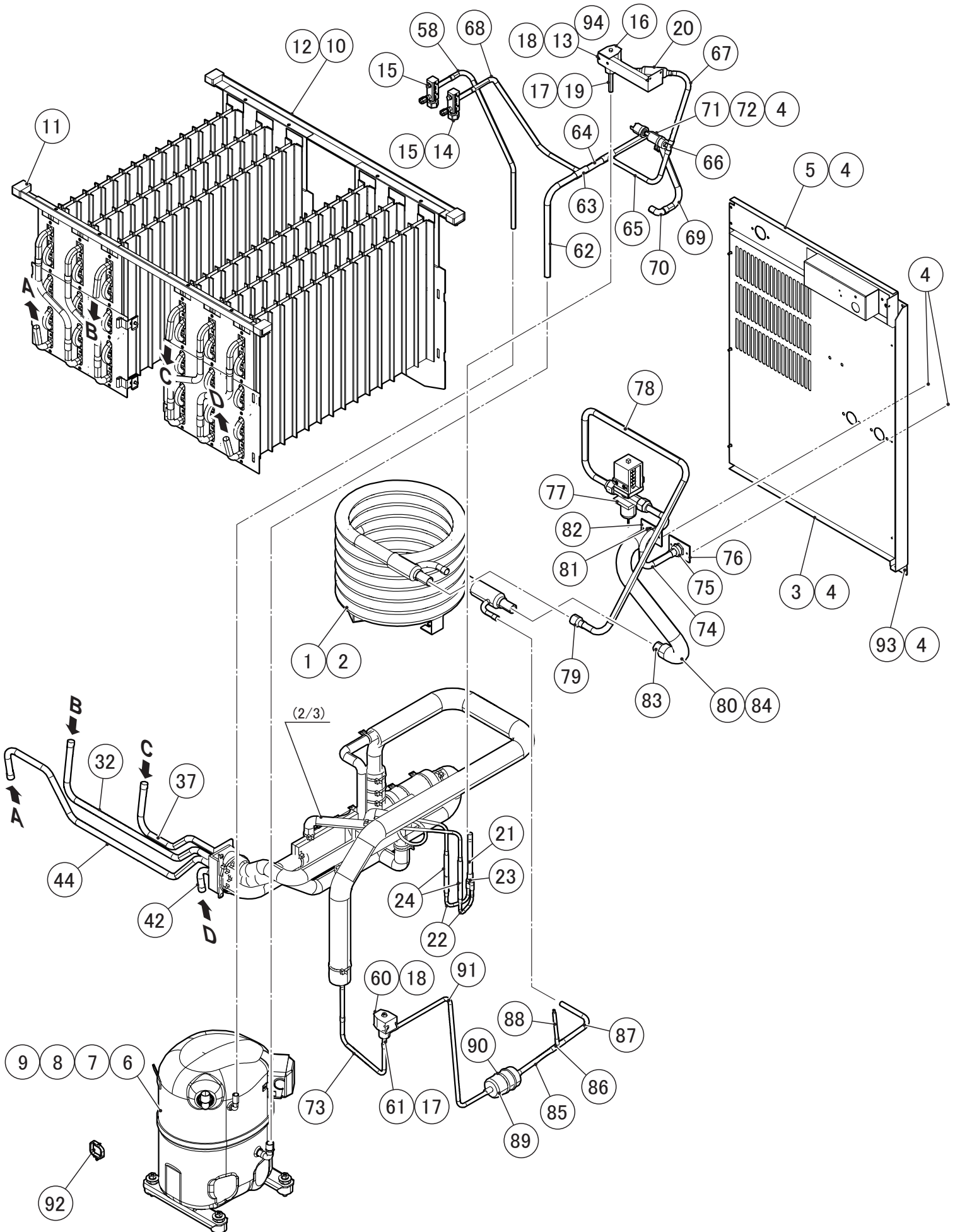
序号 INDEX NO.	部品名称 DESCRIPTION	材质或型号MATERIAL OR MODEL NUMBER	部品序号 PART NUMBER	需求数量 REQ'D NUMBER				
				J-1 L-0	L-1 M-0	M-1 N-0	N-1 and later	
50	GROMMET 环垫		434922-01	4	4	4	4	
51	INSULATION 保温材		485121Z01	1	1	1	1	
52	PUSH MOUNT TIE 电线扎带安装		437618-01	1	1	-	-	
			C06256-02	-	-	1	1	
53	BOLT 螺栓		437889-01	4	4	-	-	
			C06357-01	-	-	4	4	
54	STRAINER 滤芯		441569-02	1	1	-	-	
			C06204-01	-	-	1	1	
55	CLAMP 夹子		443461-02	2	2	2	2	
56	PRESSURE SWITCH 压力开关		P05220-01	1	1	1	1	
57	FAN BLADE 风机叶片		4A0197-01	1	1	1	1	
58	REAR FRAME 背面框		485147G01	1	1	1	1	
59	DRIER 干燥器		P02070-01	1	-	-	-	
			P05348-02	-	1	1	1	
60	CHECK VALVE 止回阀		4A1373-01	2	2	-	-	
			C06258-01	-	-	2	2	
61	INSULATION 隔热材		4A1379-01	1	1	1	1	
62	EXPANSION VALVE 膨胀阀		4A1482-01	2	2	2	2	
63	COMPRESSOR 压缩机	F137,F137-C002,F137-C101 F137-D001,F137-D002 F137-D101,F137-D201	4A1749-03	1	1	1	1	
		F137-C301,F137-C401 F137-D301,F137-D401	4A1412-03	1	1	1	1	
64	CLAMP 夹子		P05316-01	1	1	-	-	
			427902-05	-	-	1	1	

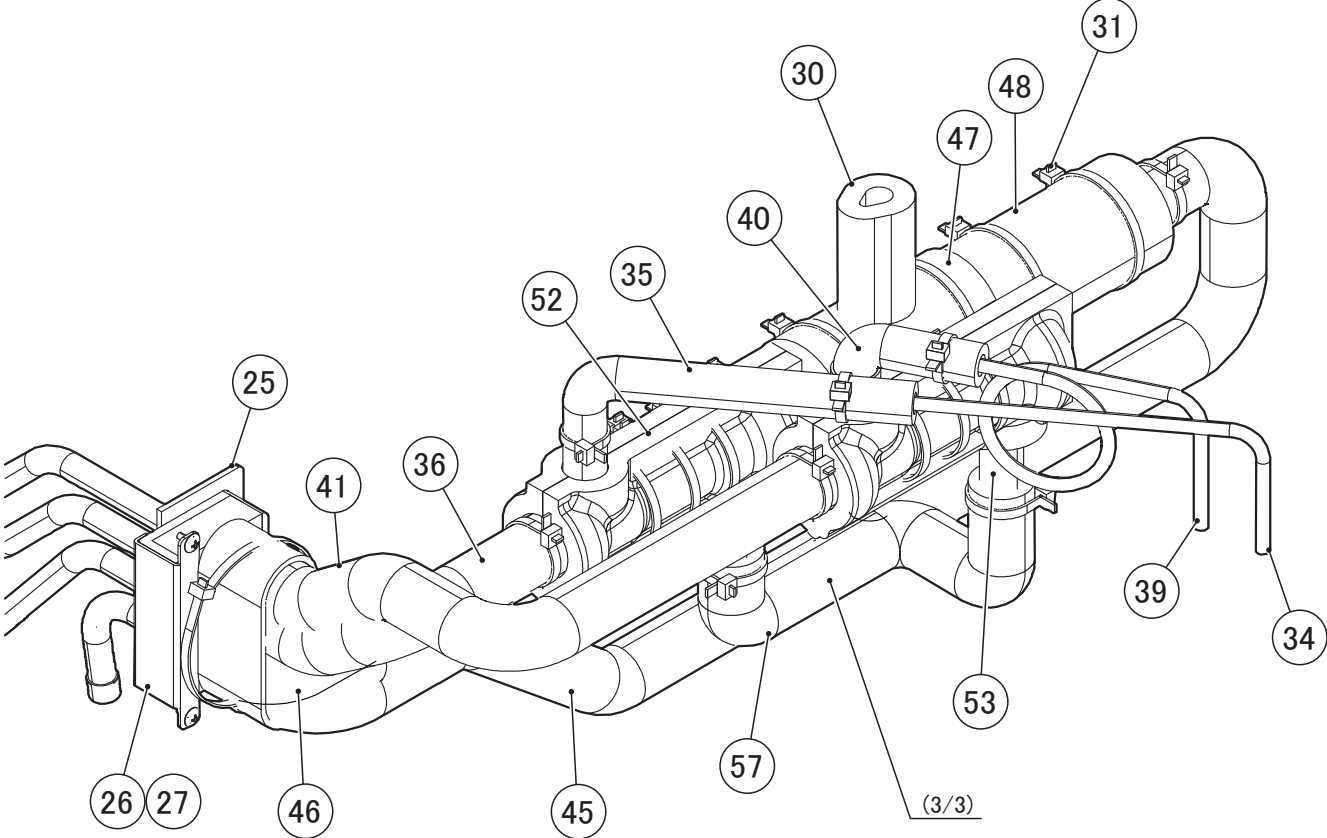
型号/MODEL: KM-590DJ

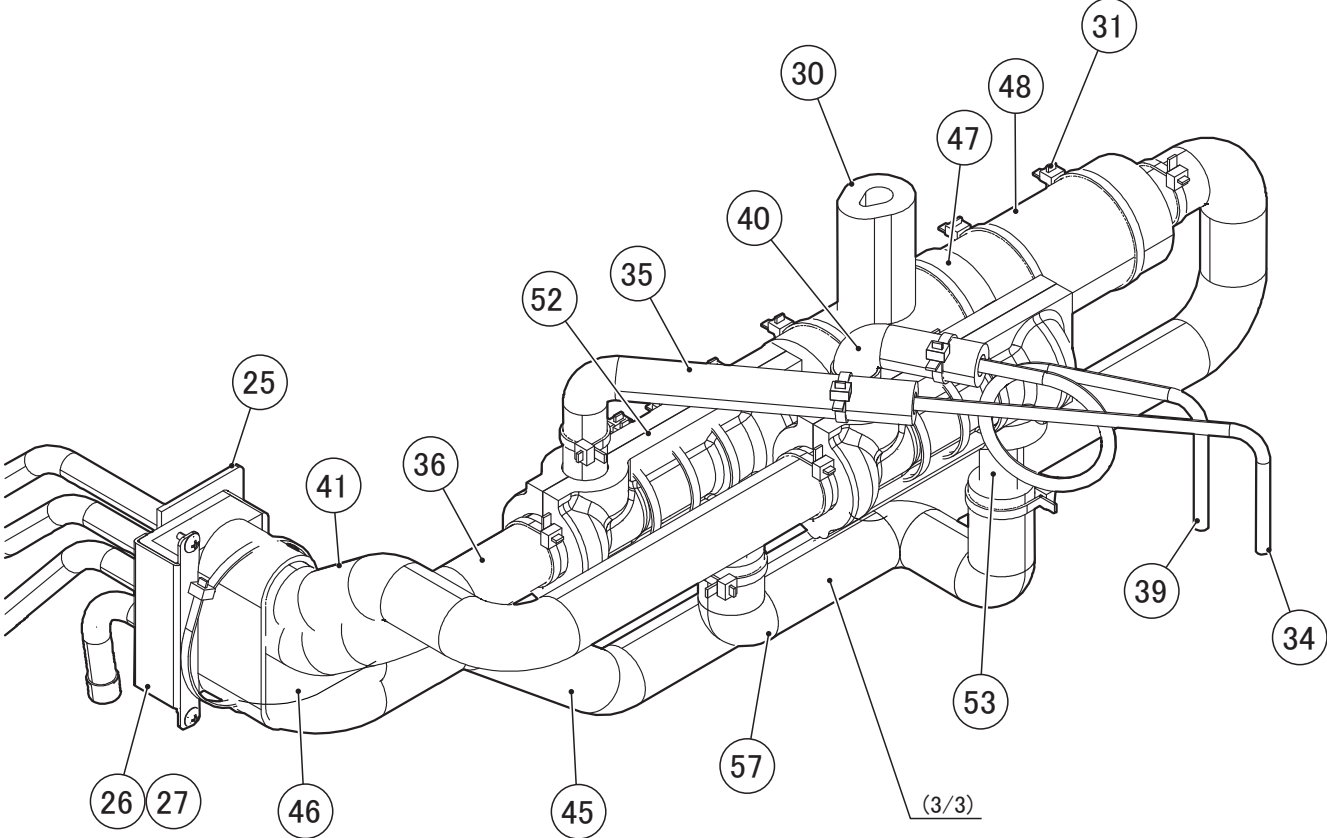
标题/TITLE: C. REFRIGERATION CIRCUIT
冷冻回路

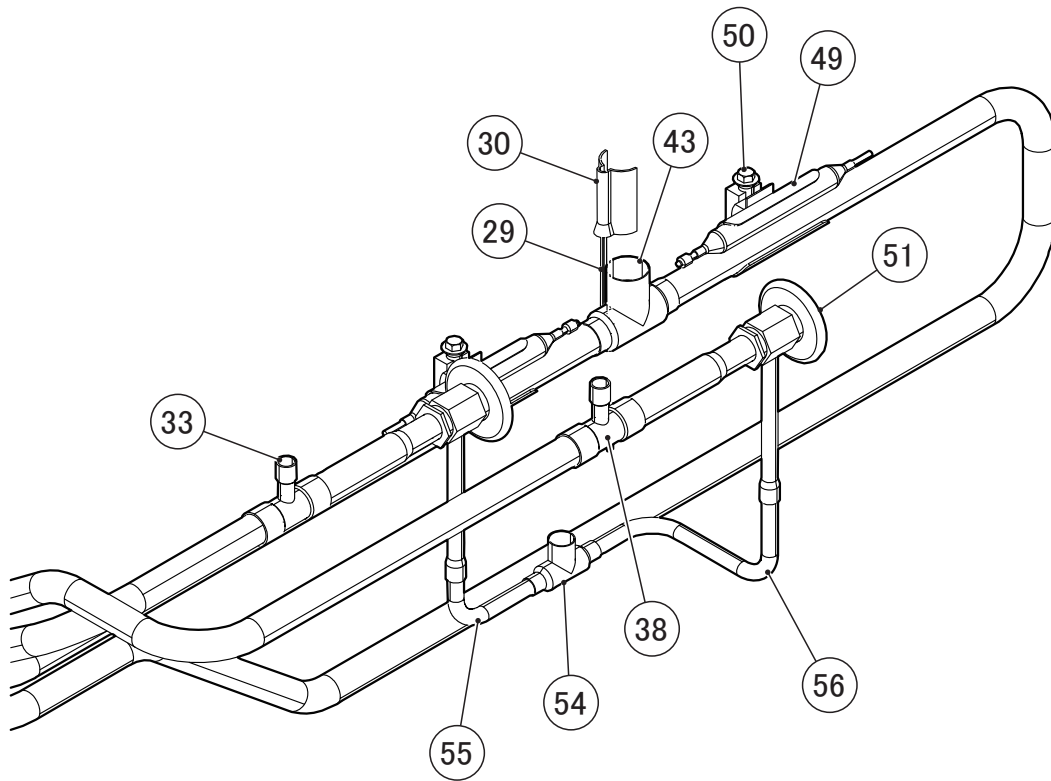
序号 INDEX NO.	部品名称 DESCRIPTION	材质或型号 MATERIAL OR MODEL NUMBER	部品序号 PART NUMBER	需求数量 REQ'D NUMBER				
				J-1 L-0	L-1 M-0	M-1 N-0	N-1 and later	
65	FAN MOTOR-HARNESS 风扇马达-线束		389850G02	1	1	1	1	
66	VALVE BODY 阀体		4A3276-01	1	1	-	-	
			C06045-01	-	-	1	1	
67	HOT GAS VALVE COIL-HARNESS 热气阀线圈-线束		389847G01	1	1	1	1	
68	LINE VALVE COIL-HARNESS 管路阀线圈-线束		389848G01	1	1	-	-	
			389848G02	-	-	1	1	
69	BOLT 螺栓		4A3277F01	2	2	1	1	
70	SERVICE VALVE 截止阀		4A3420-01	2	2	2	2	
71	VALVE BODY 阀体		4A3978-01	1	1	1	1	
72	COPPER TUBE (F) - HIGH SIDE 铜管 (F)-高压侧		485148M01	1	1	-	-	
			485148M02	-	-	1	1	
73	COPPER TUBE - SERVICE VALVE 铜管-截止阀		485149M01	1	1	1	1	
74	COPPER TUBE (Z) - HIGH SIDE 铜管 (Z) -高压侧		485150M01	1	1	1	1	
75	HOT GAS VALVE BRACKET 热气阀支架		485151M01	1	1	1	1	
76	Insulation Tube 绝缘管		H71020040	1	1	1	1	
77	INSULATION TUBE 绝缘套管		H73555150	2	2	2	2	
78	HEX HEAD BOLT (SPRING WASHER AND FLAT WASHER) 六角螺栓 (弹簧垫圈和平垫圈)		FBK0512F0	4	4	4	4	
79	HEX HEAD TAPPING SCREW 六角自攻螺丝		FBK0616S0	2	2	2	2	
80	TRUSS HEAD SCREW 桁架头螺丝	F137,F137-C101,F137-C301 F137-C401	FST0408S0	4	4	-	2	
		F137-D001,F137-D002,F137-D101 F137-D201,F137-D301,F137-D401 F137,F137-C002,F137-C101 F137-C301,F137-C401	FST0408S0	-	6	6	2	
81	T2 TRUSS HEAD SCREW T2桁架头螺丝	F137,F137-C101,F137-C301 F137-C401	FT20408F0	21	21	-	-	











型号/MODEL: **KM-590DWJ**

标题/TITLE: **C. REFRIGERATION CIRCUIT**
冷冻回路

序号 INDEX NO.	部品名称 DESCRIPTION	材质或型号MATERIAL OR MODEL NUMBER	部品序号 PART NUMBER	需求数量 REQ'D NUMBER				
				L-1 M-0	M-1 N-0	N-1 and later		
1	CONDENSER - WATER COOLED 冷凝器-水冷		P05342-01	1	1	1		
2	HEX HEAD BOLT (SPRING WASHER AND FLAT WASHER) 六角螺栓 (弹簧垫圈和平垫圈)		FBK0512S0	3	3	3		
3	REAR PANEL 背面板		279648M01	1	1	1		
4	T2 TRUSS HEAD SCREW T2桁架头螺丝	F151,F151-C101,F151-C401	FT20408F0	21	-	-		
		F151-D001,F151-D101 F151-D401,F151 F151-C101,F151-C401	FT20408F0	19	19	19		
5	REAR FRAME 背面框		485147G01	1	1	1		
6	COMPRESSOR 压缩机	F151,F151-C101 F151-D001,F151-D101	4A1749-03	1	1	1		
		F151-C401,F151-D401	4A4134-03	1	1	1		
7	GROMMET 环垫		434922-01	4	4	4		
8	SPACER 垫片		434921-01	4	4	4		
9	BOLT 螺栓		437889-01	4	-	-		
			C06357-01	-	4	4		
10	EVAPORATOR 蒸发器	F151,F151-C101,F151-C401	127982G01	1	-	-		
		F151-D001,F151-D101 F151-D401,F151 F151-C101,F151-C401	127982G02	1	1	1		
11	FRAME SEAL 框密封		323925-01	4	4	4		
12	TRUSS HEAD SCREW 桁架头螺丝		FST0412S0	4	4	4		
13	HOT GAS VALVE BRACKET 热气体阀支架		486071M01	1	1	1		
14	SERVICE VALVE 截止阀		4A3420-01	2	2	2		
15	HEX HEAD TAPPING SCREW 六角自攻螺丝		FBK0616S0	2	2	2		
16	HOT GAS VALVE COIL-HARNESS 热气体阀线圈-线束		389847G01	1	1	1		

型号/MODEL: KM-590DWJ		标题/TITLE: C. REFRIGERATION CIRCUIT 冷冻回路						
序号 INDEX NO.	部品名称 DESCRIPTION	材质或型号MATERIAL OR MODEL NUMBER	部品序号 PART NUMBER	需求数量 REQ'D NUMBER				
				L-1 M-0	M-1 N-0	N-1 and later		
17	BOLT 螺栓		4A3277F01	2	2	2		
18	TRUSS HEAD SCREW 桁架头螺丝	F151,F151-C101,F151-C401	FST0408S0	6	6	4		
		F151-D001,F151-D101 F151-D401,F151 F151-C101,F151-C401	FST0408S0	8	8	4		
19	VALVE BODY 阀体		4A3978-01	1	1	1		
20	STRAINER 滤芯		441569-02	1	-	-		
			C06204-01	-	1	1		
21	COPPER TUBE (A) - HOT GAS 铜管(A)-热气	COPPER TUBE - HOT GAS (389277G01) 铜管-热气(389277G01)	389277M01	1	1	1		
22	COPPER TUBE (B) - HOT GAS 铜管(B)-热气	COPPER TUBE - HOT GAS (389277G01) 铜管-热气(389277G01)	389277M02	2	2	2		
23	Y JOINT Y接头	COPPER TUBE - HOT GAS (389277G01) 铜管-热气(389277G01)	4A0159-01	1	-	-		
			C06280-01	-	1	1		
24	CHECK VALVE 止回阀		4A1373-01	2	-	-		
			C06258-01	-	2	2		
25	INSULATED RUBBER TUBE AY 绝缘胶管 组件		389244G01	1	1	1		
26	INSULATION - HOLDER 保温-支架		389427M01	1	1	1		
27	HEAT EXCHANGER 热交换		279644G01	1	1	1		
28	HOLDER - THERMISTOR 支架-热敏电阻		438247-01	1	-	-		
			4C0316M01	-	1	1		
29	THERMISTOR 热敏电阻		429006-03	1	1	1		
30	INSULATION - THERMISTOR 保温-热敏电阻		485131Z01	1	1	1		
31	NYLON TIE 尼龙扎带		7920-0010	36	36	36		

型号/MODEL: KM-590DWJ

标题/TITLE: C. REFRIGERATION CIRCUIT
冷冻回路

序号 INDEX NO.	部品名称 DESCRIPTION	材质或型号 MATERIAL OR MODEL NUMBER	部品序号 PART NUMBER	需求数量 REQ'D NUMBER				
				L-1 M-0	M-1 N-0	N-1 and later		
32	COPPER TUBE (L1) - HOT GAS 铜管(L1)-热气	COPPER TUBE (L) - HOT GAS 279642G01 铜管 (L)-热气 279642G01	279642M01	1	1	1		
33	TEE 三通	COPPER TUBE (L) - HOT GAS 279642G01 铜管 (L)-热气 279642G01	436000-10	1	1	1		
34	COPPER TUBE (L2) - HOT GAS 铜管(L2)-热气	COPPER TUBE (L) - HOT GAS 279642G01 铜管 (L)-热气 279642G01	279642M02	1	1	1		
35	INSULATION TUBE 绝缘套管	COPPER TUBE (L) - HOT GAS 279642G01 铜管 (L)-热气 279642G01	H71020200	1	1	1		
36	INSULATION TUBE 绝缘套管	COPPER TUBE (L) - HOT GAS 279642G01 铜管 (L)-热气 279642G01	H71630215	1	1	1		
37	COPPER TUBE (R1) - HOT GAS 铜管(R1)-热气	COPPER TUBE (R) - HOT GAS 279643G01 铜管 (R)-热气 279643G01	279643M01	1	1	1		
38	TEE 三通	COPPER TUBE (R) - HOT GAS 279643G01 铜管 (R)-热气 279643G01	436000-10	1	1	1		
39	COPPER TUBE (R2) - HOT GAS 铜管(R2)-热气	COPPER TUBE (R) - HOT GAS 279643G01 铜管 (R)-热气 279643G01	279643M02	1	1	1		
40	INSULATION TUBE 绝缘套管	COPPER TUBE (R) - HOT GAS 279643G01 铜管 (R)-热气 279643G01	H71020100	1	1	1		
41	INSULATION TUBE 绝缘套管	COPPER TUBE (R) - HOT GAS 279643G01 铜管 (R)-热气 279643G01	H71630385	1	1	1		
42	COPPER TUBE (A1) - LOW SIDE 铜管(A1)-低压侧	COPPER TUBE (A) - LOW SIDE 279647G01 铜管 (A)-低压侧 279647G01	279647M01	1	1	1		
43	TEE 三通	COPPER TUBE (A) - LOW SIDE 279647G01 铜管 (A)-低压侧 279647G01	420041-18	1	1	1		
44	COPPER TUBE (A2) - LOW SIDE 铜管(A2)-低压侧	COPPER TUBE (A) - LOW SIDE 279647G01 铜管 (A)-低压侧 279647G01	279647M02	1	1	1		
45	INSULATION TUBE 绝缘套管	COPPER TUBE (A) - LOW SIDE 279647G01 铜管 (A)-低压侧 279647G01	H71630825	1	1	1		
46	INSULATION TUBE 绝缘套管	COPPER TUBE (A) - LOW SIDE 279647G01 铜管 (A)-低压侧 279647G01	H71630280	1	1	1		
47	INSULATION TUBE 绝缘套管	COPPER TUBE (A) - LOW SIDE 279647G01 铜管 (A)-低压侧 279647G01	H72943100	1	1	1		
48	INSULATION TUBE 绝缘套管	COPPER TUBE (A) - LOW SIDE 279647G01 铜管 (A)-低压侧 279647G01	H73555150	2	2	2		

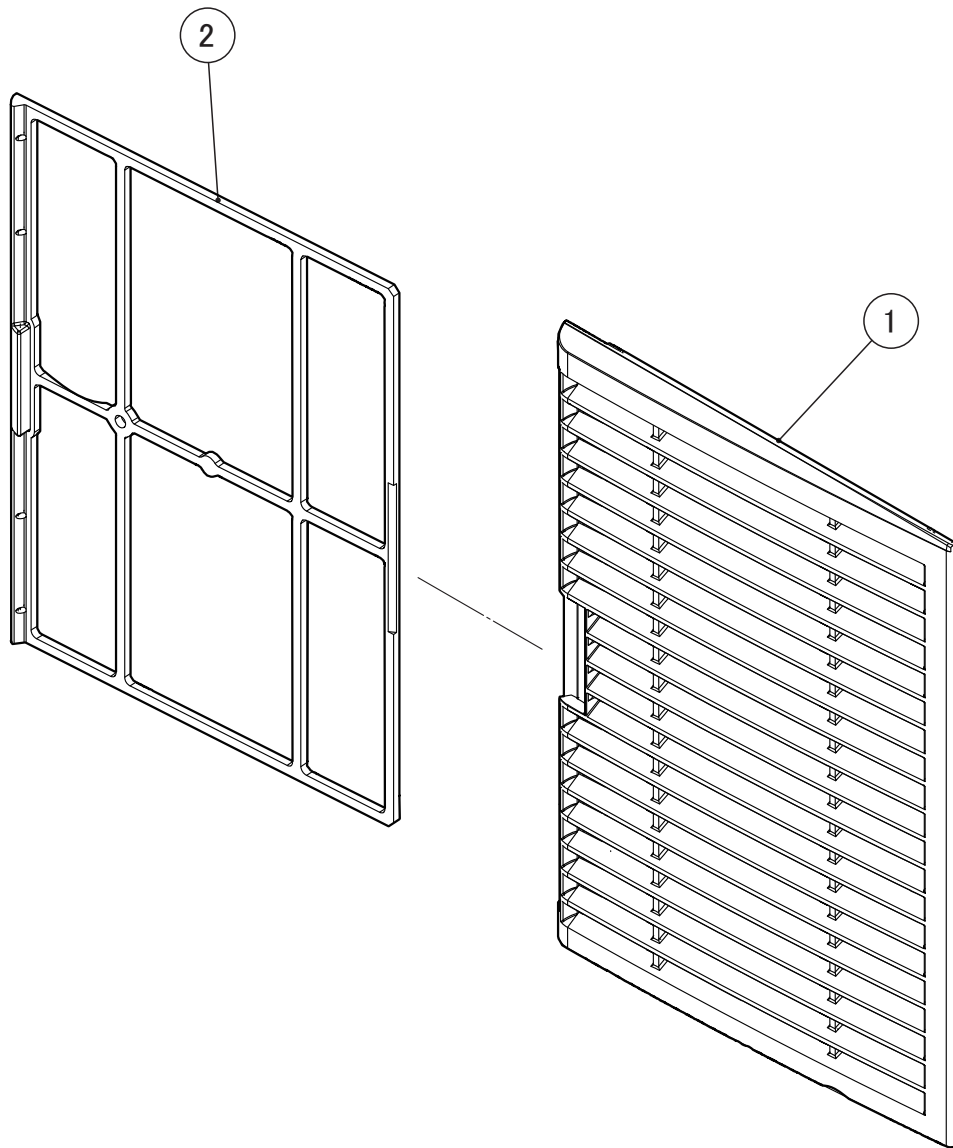
型号/MODEL: **KM-590DWJ**

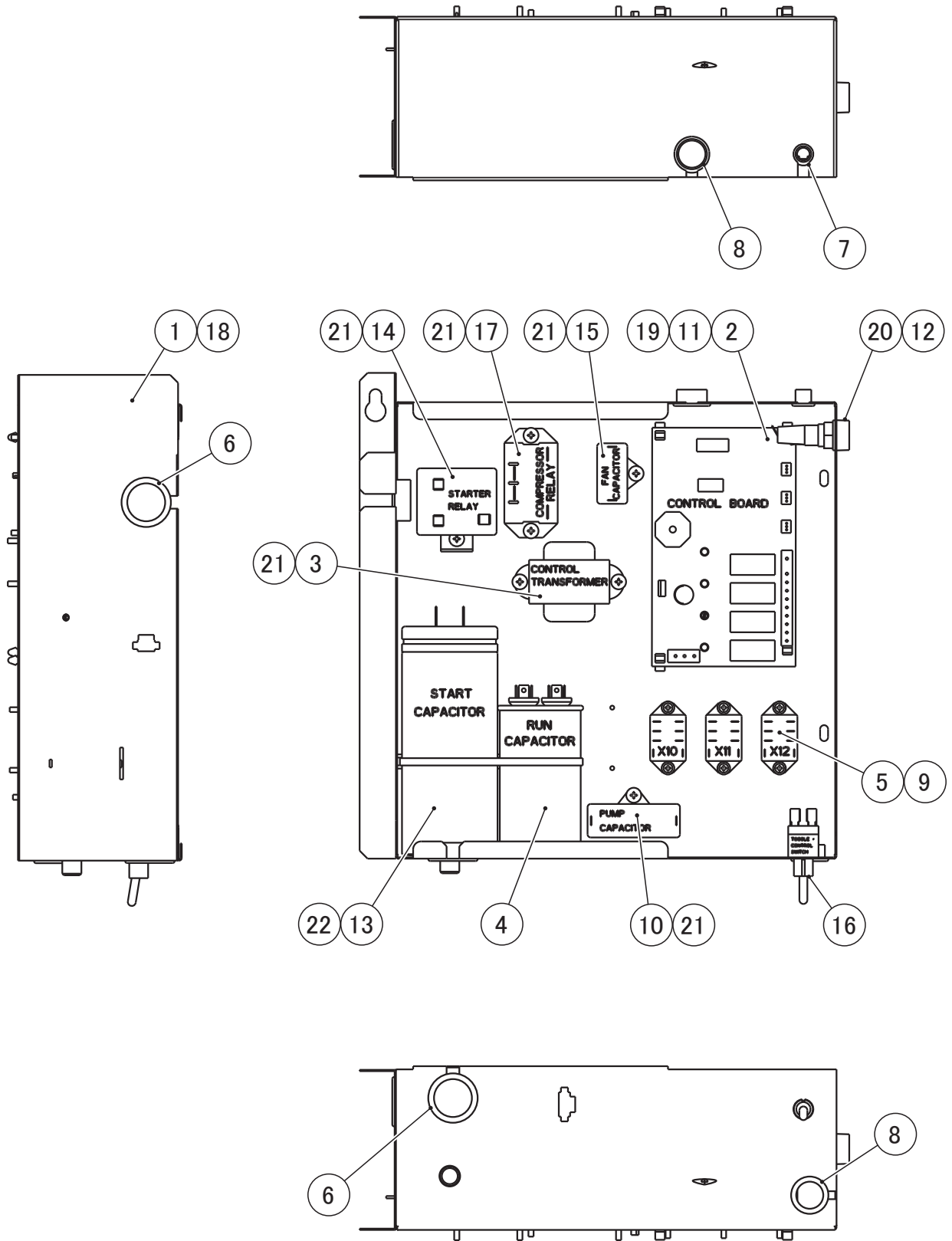
标题/TITLE: **C. REFRIGERATION CIRCUIT**
冷冻回路

序号 INDEX NO.	部品名称 DESCRIPTION	材质或型号MATERIAL OR MODEL NUMBER	部品序号 PART NUMBER	需求数量 REQ'D NUMBER				
				L-1 M-0	M-1 N-0	N-1 and later		
49	HOLDER - EXP. VALVE 3/8 支架-膨胀阀3/8		3C0058M01	2	-	-		
	BAND - EXP. VALVE 支架-膨胀阀		C06282F01	-	2	2		
50	CLAMP 夹子		443461-02	2	2	2		
51	EXPANSION VALVE 膨胀阀		4A1482-01	2	2	2		
52	INSULATION - EXP.V 膨胀阀隔热材		3A0944-01	2	2	2		
53	INSULATION TUBE 绝缘套管		H71020060	2	2	2		
54	TEE 三通	COPPER TUBE (A) - EXP. VALVE 391014G01 铜管 (A)-膨胀阀 391014G01	420041-16	1	1	1		
55	COPPER TUBE (A1) - EVAP. VALVE 铜管(A1) - EVAP阀	COPPER TUBE (A) - EXP. VALVE 391014G01 铜管 (A)-膨胀阀 391014G02	391014M01	1	1	1		
56	COPPER TUBE (A2) - EVAP. VALVE 铜管(A2) - EVAP阀	COPPER TUBE (A) - EXP. VALVE 391014G01 铜管 (A)-膨胀阀 391014G03	391014M02	1	1	1		
57	INSULATION TUBE 绝缘套管	COPPER TUBE (A) - EXP. VALVE 391014G01 铜管 (A)-膨胀阀 391014G04	H71630250	1	1	1		
58	COPPER TUBE - SERVICE VALVE 铜管-截止阀		485149M01	1	1	1		
59	INSULATION 绝缘保温		485121Z01	1	1	1		
60	LINE VALVE COIL-HARNESS 管路阀线圈-线束		389848G01	1	-	-		
			389848G02	-	1	1		
61	VALVE BODY 阀体		4A3276-01	1	-	-		
			C06045-01	-	1	1		
62	COPPER TUBE (B1) - HIGH SIDE 铜管 (B1) -高压侧	COPPER TUBE (B) - HIGH SIDE 279641G01 铜管 (B)-高压侧 279641G01	279641M01	1	1	1		
63	TEE 三通	COPPER TUBE (B) - HIGH SIDE 279641G01 铜管 (B)-高压侧 279641G01	420041-06	2	2	2		
64	COPPER TUBE (B2) - HIGH SIDE 铜管 (B2) -高压侧	COPPER TUBE (B) - HIGH SIDE 279641G01 铜管 (B)-高压侧 279641G01	279641M02	1	1	1		

型号/MODEL: **KM-590DWJ**标题/TITLE: **C. REFRIGERATION CIRCUIT**
冷冻回路

序号 INDEX NO.	部品名称 DESCRIPTION	材质或型号MATERIAL OR MODEL NUMBER	部品序号 PART NUMBER	需求数量 REQ'D NUMBER				
				L-1 M-0	M-1 N-0	N-1 and later		
65	COPPER TUBE (B3) - HIGH SIDE 铜管 (B3) - 高压侧	COPPER TUBE (B) - HIGH SIDE 279641G01 铜管 (B) - 高压侧 279641G01	279641M03	1	1	1		
66	TEE 三通	COPPER TUBE (B) - HIGH SIDE 279641G01 铜管 (B) - 高压侧 279641G01	436000-06	1	1	1		
67	COPPER TUBE (B4) - HIGH SIDE 铜管 (B4) - 高压侧	COPPER TUBE (B) - HIGH SIDE 279641G01 铜管 (B) - 高压侧 279641G01	279641M04	1	1	1		
68	COPPER TUBE (B5) - HIGH SIDE 铜管 (B5) - 高压侧	COPPER TUBE (B) - HIGH SIDE 279641G01 铜管 (B) - 高压侧 279641G01	279641M05	1	1	1		
69	COPPER TUBE (B6) - HIGH SIDE 铜管 (B6) - 高压侧	COPPER TUBE (B) - HIGH SIDE 279641G01 铜管 (B) - 高压侧 279641G01	279641M06	1	1	1		
70	90EB ELBOW 3/8 90EB 弯头3/8	COPPER TUBE (B) - HIGH SIDE 279641G01 铜管 (B) - 高压侧 279641G01	419753-02	1	1	1		
71	PRESSURE SWITCH 压力开关		P05220-01	1	1	1		
72	INSULATION TUBE 绝缘套管		H71020040	1	1	1		
73	COPPER TUBE (F) - HIGH SIDE 铜管 (F) - 高压侧		486081M01	1	-	-		
			486081M02	-	1	1		
74	COPPER TUBE (C1) - WATER CIRCUIT 铜管 (C1) - 水回路	COPPER TUBE (C) - WATER CIRCUIT 390993G01 铜管 (C) - 水回路 390993G01	390993M01	1	1	1		
75	INLET FITTING 入口接头	COPPER TUBE (C) - WATER CIRCUIT 390993G01 铜管 (C) - 水回路 390993G01	P01214-01	1	1	1		
76	FITTING HOLDER 接头座	COPPER TUBE (C) - WATER CIRCUIT 390993G01 铜管 (C) - 水回路 390993G01	4A0764-01	1	1	1		
77	WATER REGULATOR 水压调节阀	F151,F151-C101	P04029-01	1	1	1		
		F151-C401	P05010-01	1	1	1		
78	COPPER TUBE (B1) - WATER CIRCUIT 铜管 (B1) - 水回路	COPPER TUBE (B) - WATER CIRCUIT 391016G01 铜管 (B) - 水回路 391016G01	391016M01	1	1	1		
79	REDUCER 减压器	COPPER TUBE (B) - WATER CIRCUIT 391016G01 铜管 (B) - 水回路 391016G01	421904-10	1	1	1		
80	COPPER TUBE (A1) - WATER CIRCUIT 铜管 (A1) - 水回路	COPPER TUBE (A) - WATER CIRCUIT 391015G01 铜管 (A) - 水回路 391015G01	391015M01	1	1	1		





型号/MODEL: **KM-590DJ**

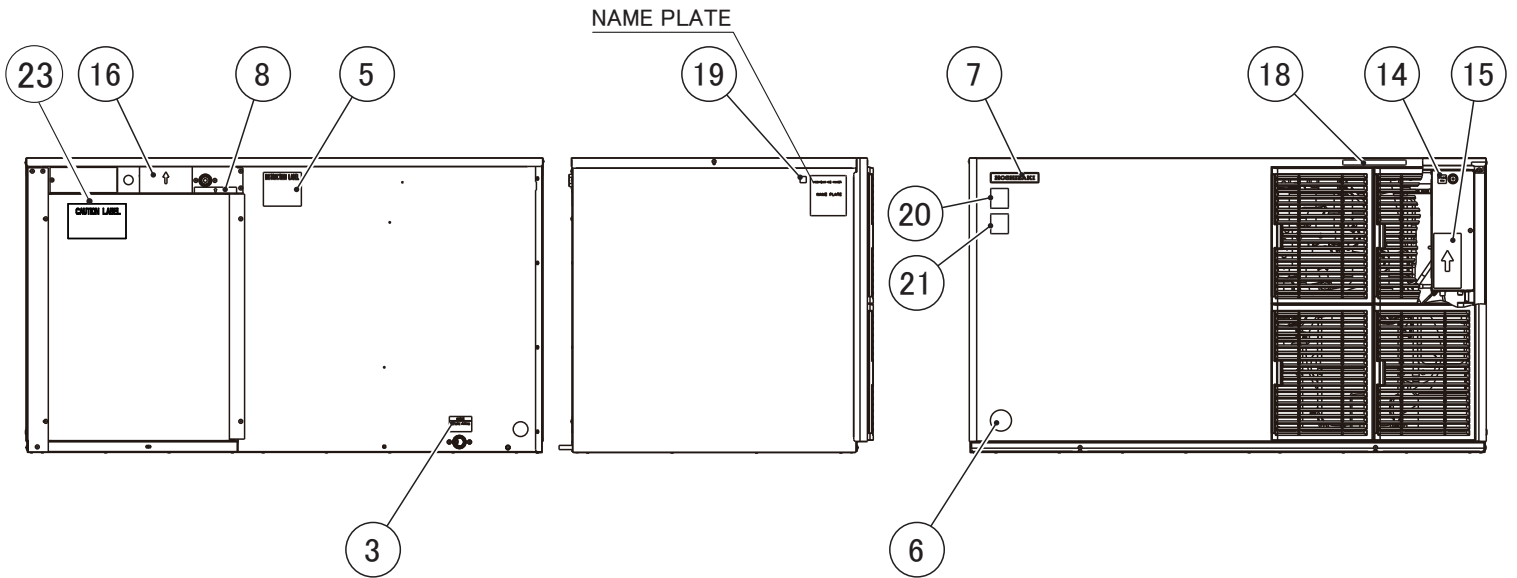
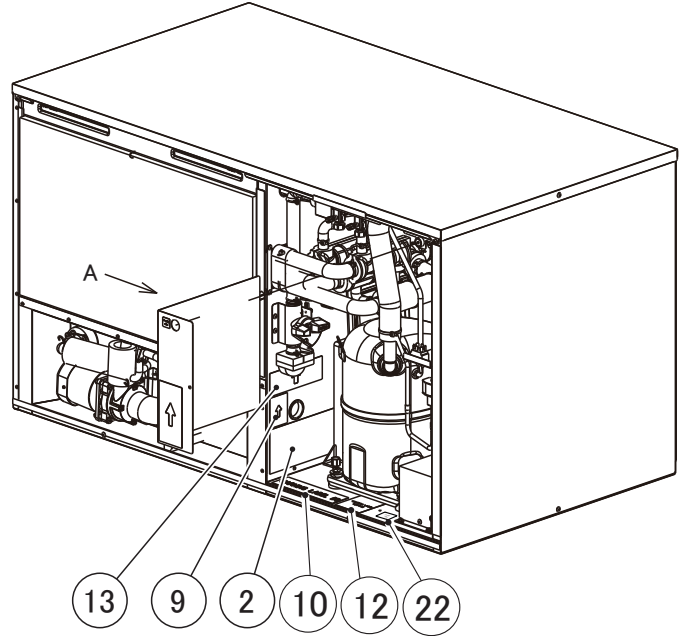
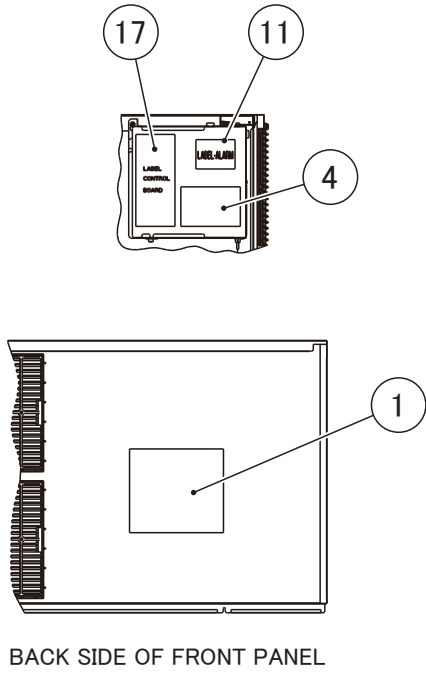
标题/TITLE: **E. CONTROL BOX AY**
控制盒组件

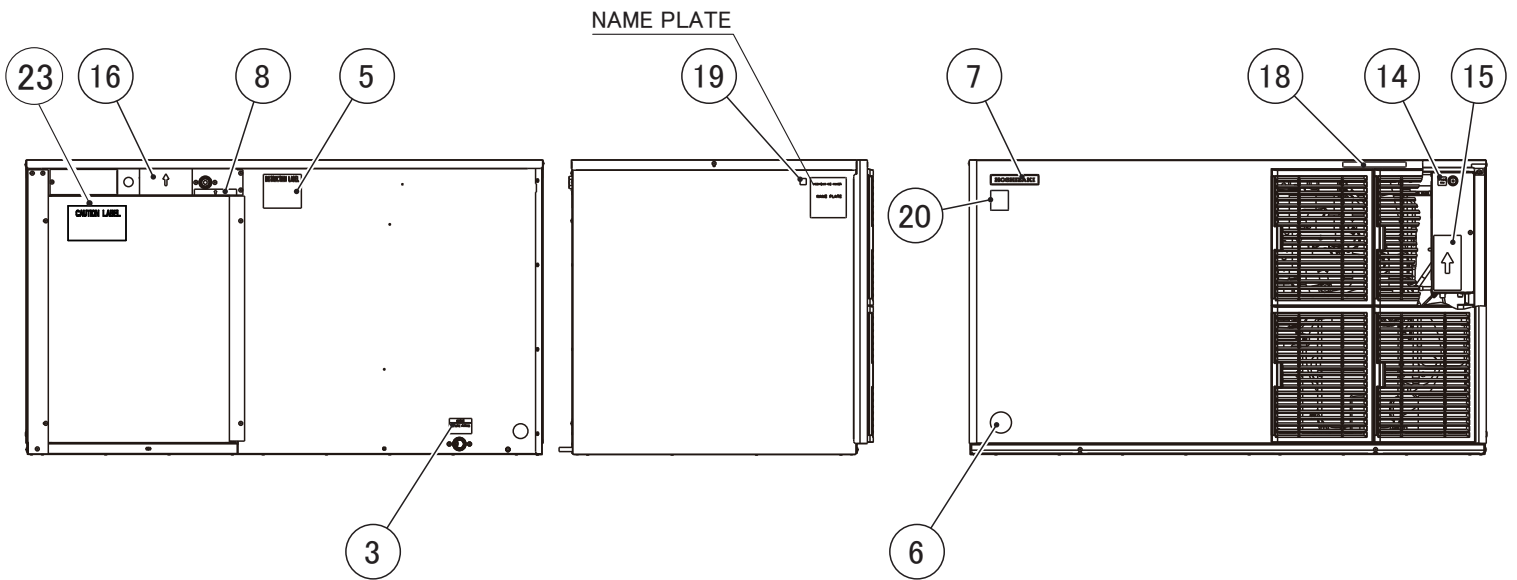
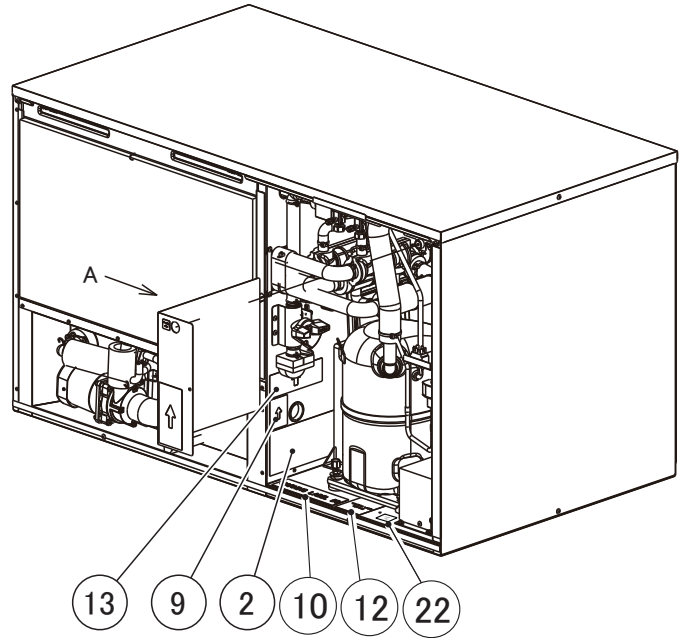
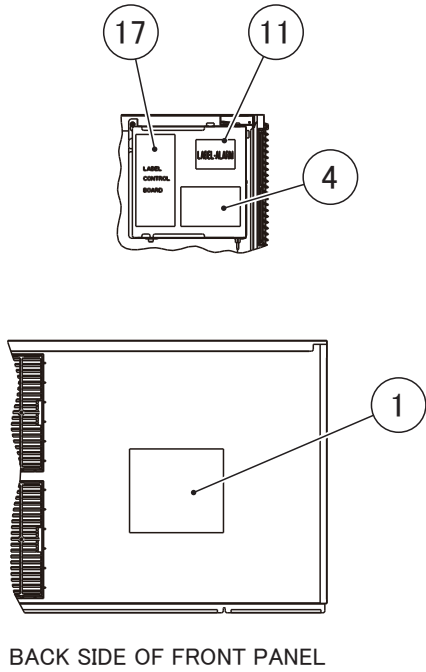
序号 INDEX NO.	部品名称 DESCRIPTION	材质或型号MATERIAL OR MODEL NUMBER	部品序号 PART NUMBER	需求数量 REQ'D NUMBER				
				J-1 and later				
1	CONTROL BOX 控制盒		277649G01	1				
2	CONTROL BOARD J 控制板J		2A7664-04	1				
3	POWER TRANSFORMER 电源变压器		C06378-01	1				
4	CAPACITOR-RUN 电容-运行	F137,F137-C002,F137-C101 F137-D001,F137-D002 F137-D101,F137-D201 F151,F151-C101 F151-D001,F151-D101	3A2005-12	1				
		F137-C301,F137-C401 F137-D301,F137-D401	3A2005-05	1				
		F151-C401,F151-D401	3A2005-03	1				
5	RELAY 继电器		406132-07	3				
6	BUSHING 衬套		420470-03	2				
7	BUSHING 衬套		428394-02	1				
8	BUSHING 衬套		428394-04	2				
9	T2(S) FLANGED PAN HEAD SCREW T2 (S) 法兰盘头螺丝		431415-01	6				
10	CAPACITOR 电容	F137,F137-C002,F137-C101 F137-C301,F137-C401 F137-D001,F137-D002 F137-D101,F137-D201 F137-D301,F137-D401	P05273-02	1				
		F151,F151-C101,F151-C401 F151-D001,F151-D101 F151-D401	P05273-01	1				
11	BOARD SUPPORT 主板支撑		P01770-01	4				
12	FUSE 保险丝		P01432-01	1				
13	CAPACITOR-START 电容-启动	F137,F137-C002,F137-C101 F151,F151-C101,F137-D001 F137-D002,F137-D101 F137-D201,F151-D001 F151-D101	4A1094-01	1				
		F137-C301,F137-C401 F137-D301,F137-D401	3A0076-01	1				
		F151-C401,F151-D401	3A0076-11	1				

型号/MODEL: **KM-590DJ**

标题/TITLE: **E. CONTROL BOX AY**
控制盒组件

序号 INDEX NO.	部品名称 DESCRIPTION	材质或型号MATERIAL OR MODEL NUMBER	部品序号 PART NUMBER	需求数量 REQ'D NUMBER				
				J-1 and later				
14	STARTER 启动器	F137,F137-C002,F137-C101 F137-D001,F137-D002 F137-D101,F137-D201 F151,F151-C101 F151-D001,F151-D101 F151-C401,F151-D401	4A1107-13	1				
		F137-C301,F137-C401 F137-D301,F137-D401	4A1107-09	1				
15	CAPACITOR 电容		P05273-02	1				
16	TOGGLE SWITCH 拨动开关		P01206-01	1				
17	POWER RELAY 电源继电器		449000-01	1				
18	HARNESS 线束	F137,F137-C002,F137-C101 F137-C301,F137-C401 F137-D001,F137-D002 F137-D101,F137-D201 F137-D301,F137-D401	278495Z01	1				
		F151,F151-C101 F151-D001,F151-D101 F151-C401,F151-D401	279650Z01	1				
19	WIRE HARNESS - CONNECTION 线束-连接		390052G01	1				
20	FUSE HOLDER 保险丝座		P00014-01	1				
21	T2 TRUSS HEAD SCREW T2桁架头螺丝		FT20408M0	7				
22	NYLON TIE 尼龙扎带		7920-0010	2				





型号/MODEL: **KM-590DJ**

标题/TITLE: **F. LABEL LOCATION**
标签位置

序号 INDEX NO.	部品名称 DESCRIPTION	材质或型号MATERIAL OR MODEL NUMBER	部品序号 PART NUMBER	需求数量 REQ'D NUMBER				
				J-1 N-0	N-1 and later			
1	MAINTENANCE LABEL	F137,F137-C002,F137-C301 F151,F137-D001,F137-D002 F137-D201,F137-D301 F151-D001	389489L01	1	1			
	维修标签	F137-C101,F137-C401 F137-D101,F137-D401 F151-C101,F151-C401 F151-D101,F151-D401	391909L01	1	1			
2	MANUAL LABEL - MECH. BIN CONTROL	F137,F137-C002,F137-C301 F151,F137-D001,F137-D002 F137-D201,F137-D301 F151-D001	389490L01	1	1			
	手动标签-机械.储冰箱控制	F137-C101,F137-C401 F137-D101,F137-D401 F151-C101,F151-C401 F151-D101,F151-D401	391910L01	1	1			
3	NOTICE LABEL - PLASTIC FITTING	F137,F137-C002,F137-C301 F151,F137-D001,F137-D002 F137-D201,F137-D301 F151-D001	389486L01	1	1			
	警告标签-塑料配件	F137-C101,F137-C401 F137-D101,F137-D401 F151-C101,F151-C401 F151-D101,F151-D401	391906L01	1	1			
4	WIRING LABEL	F137,F137-C002,F151 F137-D001,F137-D002 F137-D201,F151-D001	389480L01	1	1			
	配线标签	F137-C101,F137-D101 F151-C101,F151-D101	391911L01	1	1			
		F137-C301,F137-C401 F137-D301,F137-D401 F151-C401,F151-D401	392089L01	1	1			
5	INSTRUCTION LABEL	F137,F137-C002,F137-C301 F151,F137-D001,F137-D002 F137-D201,F137-D301 F151-D001	485268L01	1	1			
	指示标签	F137-C101,F137-C401 F137-D101,F137-D401 F151-C101,F151-C401 F151-D101,F151-D401	486444L01	1	1			
6	CHARACTER LABEL - PENGUIN 特征标签-企鹅		475552L02	1	1			
7	EMBLEM 徽章		340842-01	1	1			

型号/MODEL: **KM-590DJ**

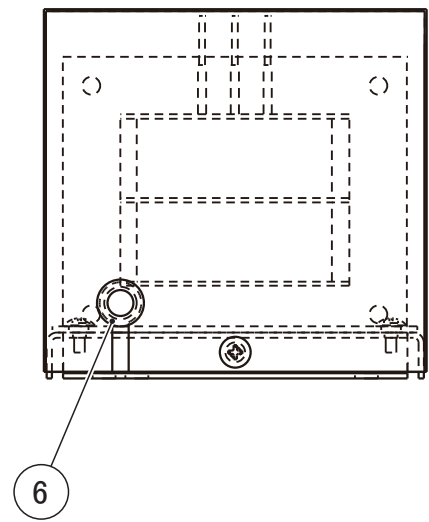
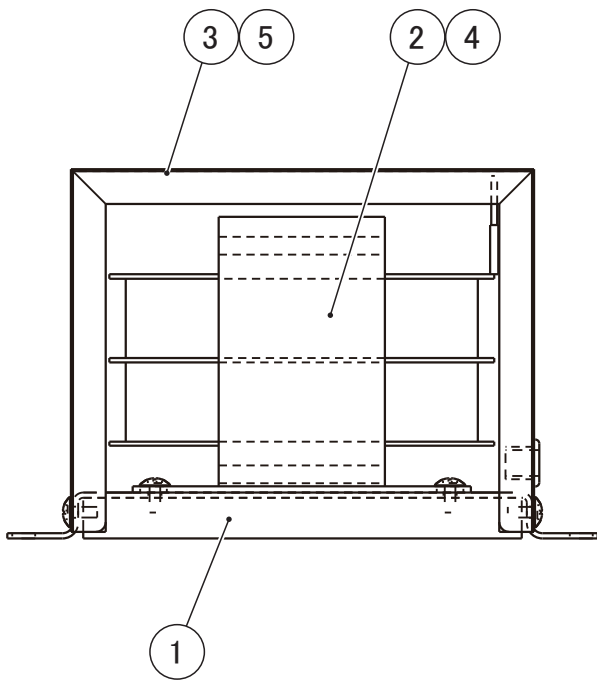
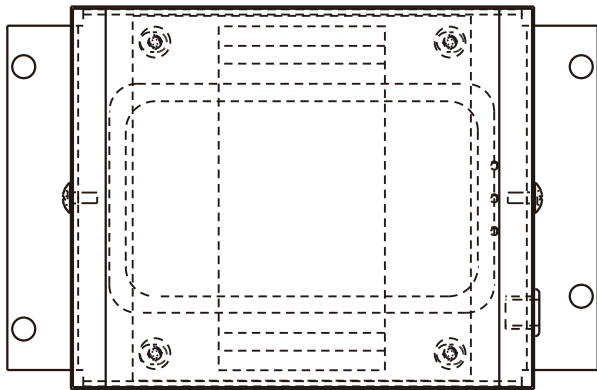
标题/TITLE: **F. LABEL LOCATION**
标签位置

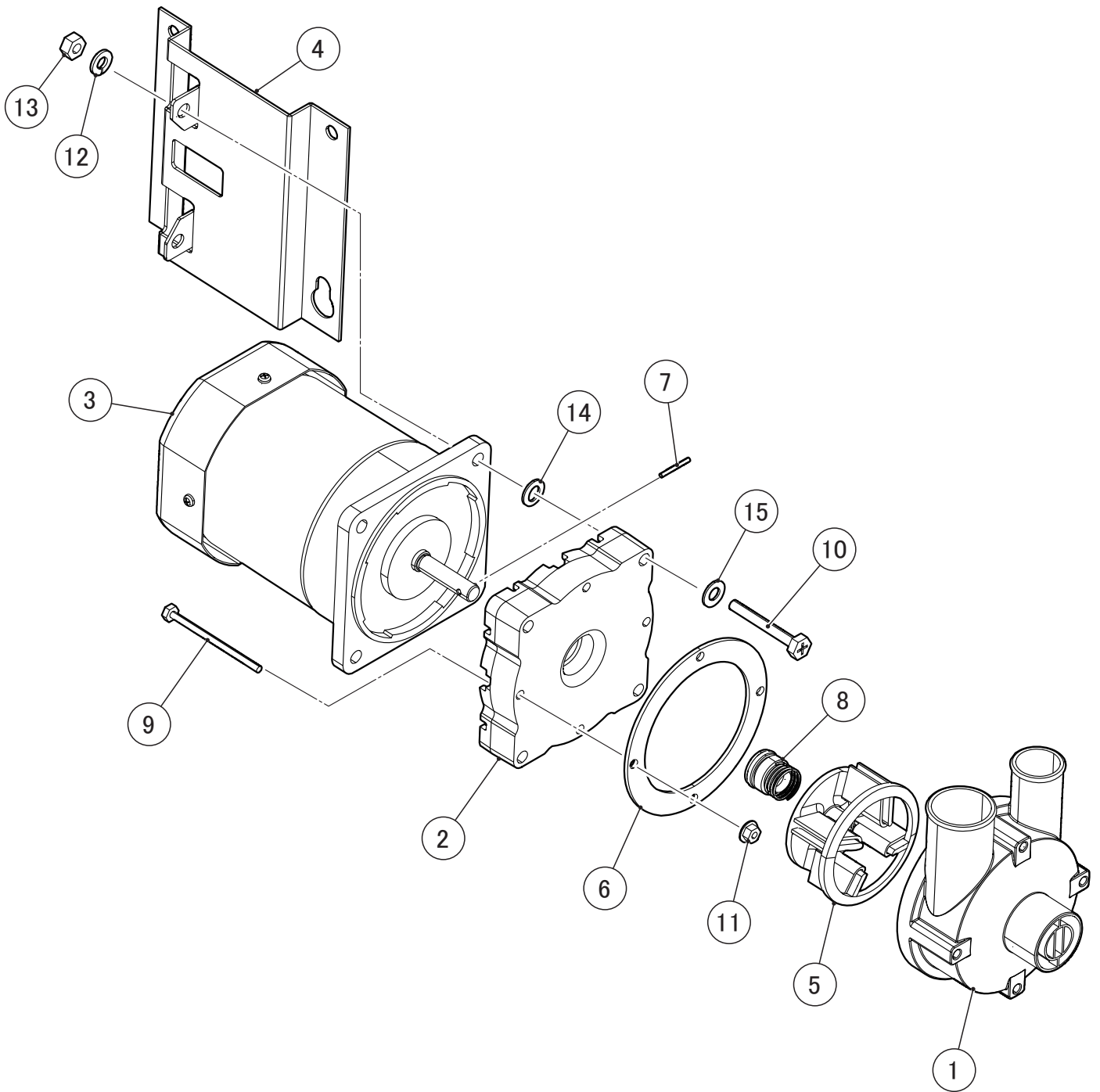
序号 INDEX NO.	部品名称 DESCRIPTION	材质或型号MATERIAL OR MODEL NUMBER	部品序号 PART NUMBER	需求数量 REQ'D NUMBER				
				J-1 N-0	N-1 and later			
8	WATER SUPPLY LABEL	F137,F137-C002,F137-C301 F151,F137-D001,F137-D002 F137-D201,F137-D301 F151-D001	485277L01	1	1			
	供水标签	F137-C101,F137-C401 F137-D101,F137-D401 F151-C101,F151-C401 F151-D101,F151-D401	486454L01	1	1			
9	PROCESS VALVE LABEL	F137,F137-C002,F137-C301 F151,F137-D001,F137-D002 F137-D201,F137-D301 F151-D001	485269L01	1	1			
	工艺阀标签	F137-C101,F137-C401 F137-D101,F137-D401 F151-C101,F151-C401 F151-D101,F151-D401	486445L01	1	1			
10	WARNING LABEL (K)	F137,F137-C002,F137-C301 F151,F137-D001,F137-D002 F137-D201,F137-D301 F151-D001	485270L01	1	1			
	警告标签 (K)	F137-C101,F137-C401 F137-D101,F137-D401 F151-C101,F151-C401 F151-D101,F151-D401	486446L01	1	1			
11	LABEL - ALARM	F137,F137-C002,F137-C301 F151,F137-D001,F137-D002 F137-D201,F137-D301 F151-D001	485271L01	1	1			
	标签-警报	F137-C101,F137-C401 F137-D101,F137-D401 F151-C101,F151-C401 F151-D101,F151-D401	486447L01	1	1			
12	CAUTION LABEL - SERVICE	F137,F137-C002,F137-C301 F151,F137-D001,F137-D002 F137-D201,F137-D301 F151-D001	471180L01	1	1			
	警示标签-维修	F137-C101,F137-C401 F137-D101,F137-D401 F151-C101,F151-C401 F151-D101,F151-D401	471348L01	1	1			
13	OPERATION LABEL - VALVE	F137,F137-C002,F137-C301 F151,F137-D001,F137-D002 F137-D201,F137-D301 F151-D001	485272L01	1	1			
	操作标签-阀门	F137-C101,F137-C401 F137-D101,F137-D401 F151-C101,F151-C401 F151-D101,F151-D401	486448L01	1	1			

型号/MODEL: **KM-590DJ**

标题/TITLE: **F. LABEL LOCATION**
标签位置

序号 INDEX NO.	部品名称 DESCRIPTION	材质或型号MATERIAL OR MODEL NUMBER	部品序号 PART NUMBER	需求数量 REQ'D NUMBER				
				J-1 N-0	N-1 and later			
14	LABEL - FUSE	F137,F137-C002,F137-C301 F151,F137-D001,F137-D002 F137-D201,F137-D301 F151-D001	485273L01	1	1			
	标签-保险丝	F137-C101,F137-C401 F137-D101,F137-D401 F151-C101,F151-C401 F151-D101,F151-D401	486449L01	1	1			
15	MANUAL LABEL	F137,F137-C002,F137-C301 F151,F137-D001,F137-D002 F137-D201,F137-D301 F151-D001	485274L01	1	1			
	手动标签	F137-C101,F137-C401 F137-D101,F137-D401 F151-C101,F151-C401 F151-D101,F151-D401	486450L01	1	1			
16	LABEL - WARNING MAINS CONNECTION	F137,F137-C002,F137-C301 F151,F137-D001,F137-D002 F137-D201,F137-D301 F151-D001	485278L01	1	1			
	标签-配线主连接	F137-C101,F137-C401 F137-D101,F137-D401 F151-C101,F151-C401 F151-D101,F151-D401	486455L01	1	1			
17	LABEL - CONTROL BOARD	F137,F137-C002,F137-C301 F151,F137-D001,F137-D002 F137-D201,F137-D301 F151-D001	485276L01	1	1			
	标签-控制板	F137-C101,F137-C401 F137-D101,F137-D401 F151-C101,F151-C401 F151-D101,F151-D401	486452L01	1	1			
18	LABEL - AIR FILTER	F137,F137-C002,F137-C301 F137-D001,F137-D002 F137-D201,F137-D301	426177-01	1	1			
	标签-空气过滤	F137-C101,F137-C401 F137-D101,F137-D401	455367-01	1	1			
19	LABEL-REGULATION A 标签-规则法规 (A)	F137-C101,F151-C101 F137-D101,F151-D101	482347L01	1	1			
20	LABEL-HACCP 标签-有害物质管控		476519L01	1	1			
21	LABEL-CFC AND HCFC FREE 标签-无氟利昂		482091L01	1	1			
		F137,F137-D001,F151,F151-D001		1	-			
22	CAUTION LABEL 警告标签		473789L01	1	1			
23	CAUTION LABEL	F137-C101,F137-D101 F151-C101,F151-D101	4C0220L01	1	1			
	警告标签	F137-D201	4C0221L01	1	1			

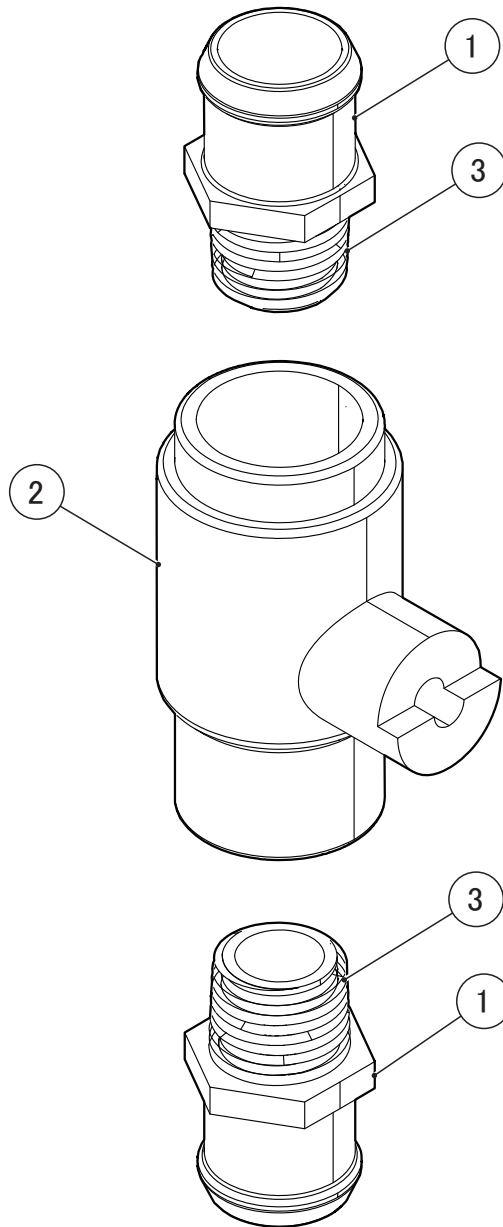


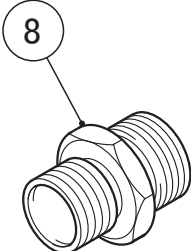
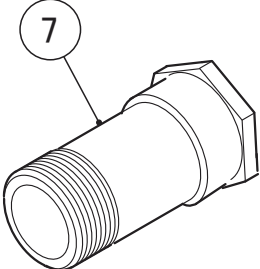
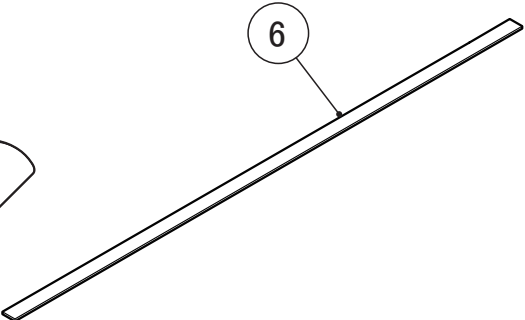
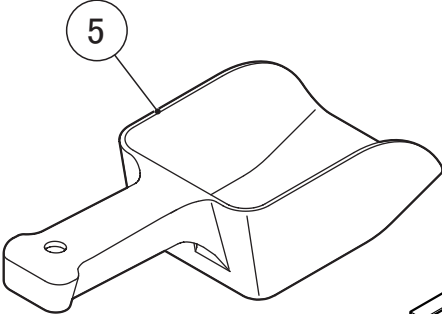
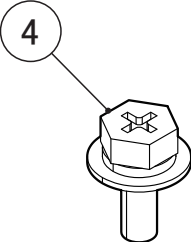
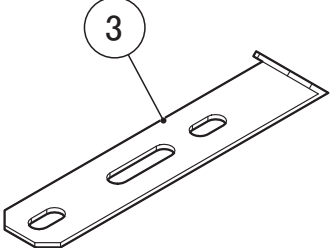
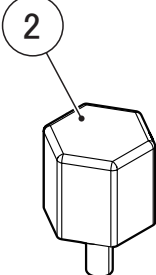
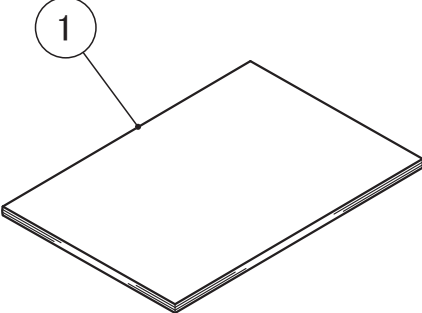


型号/MODEL: KM-590DJ

标题/TITLE: H. PUMP MOTOR AY
泵马达组件

序号 INDEX NO.	部品名称 DESCRIPTION	材质或型号 MATERIAL OR MODEL NUMBER	部品序号 PART NUMBER	需求数量 REQ'D NUMBER				
				J-1 and later				
1	PUMP HOUSING 泵壳体		277531P01	1				
2	PUMP FLANGE 泵法兰		277515P01	1				
3	PUMP MOTOR-HARNESS 泵马达-线束		389851G01	1				
4	PUMP MOTOR BRACKET 泵马达支架		389276M01	1				
5	IMPELLER(A) 叶轮 (A)	F137,F137-C002 F137-C101 F137-D001,F137-D002 F137-D101,F137-D201 F151,F151-C101 F151-D001,F151-D101	334706G01	1				
		F137,F137-C002 F137-C101,F137-C301 F137-C401,F137-D001 F137-D002,F137-D101 F137-D201,F137-D301 F137-D401 F151,F151-C101 F151-C401,F151-D001 F151-D101,F151-D401	436584-01	1				
6	PACKING 包装		485076R01	1				
7	PIN 销子		485094M01	1				
8	MECHANICAL SEAL 机器密封		4A3820-03	1				
9	HEX HEAD BOLT 六角螺栓		FBH0455S0	4				
10	HEX HEAD BOLT 六角螺栓		FBH0640S0	4				
11	FLANGE NUT 法兰螺母		FNHF04S0	4				
12	SPRING WASHER 弹簧垫圈		FWSP06S0	4				
13	NUT 螺母		FNH106S0	4				
14	TOOTH WASHER 齿垫圈		FWTB06S0	2				
15	FLAT WASHER 平垫圈		FWPL06S0	4				





型号/MODEL: **KM-590DJ**

标题/TITLE: **L. ACCESSORIES**
附件

序号 INDEX NO.	部品名称 DESCRIPTION	材质或型号 MATERIAL OR MODEL NUMBER	部品序号 PART NUMBER	需求数量 REQ'D NUMBER				
				J-1 and later				
1	INSTRUCTION MANUAL	F137,F137-C002 F137-C301,F151 F137-D001,F137-D002 F137-D201,F137-D301 F151-D001,F151-D101	L1F137104	1				
	说明书	F137-C101,F137-D101 F151-C101,F151-D101	L1F137306	1				
		F137-C401,F137-D401 F151-C401,F151-D401	L1F137313	1				
2	THUMBSCREW 指旋螺丝		415949G12	1				
3	UNIVERSAL BRACE 通用支撑架		473048M01	2				
4	HEX HEAD BOLT (SPRING WASHER AND FLAT WASHER) 六角螺栓(弹簧垫圈和平垫圈)		FBK0512S0	4				
5	SCOOP 冰铲	F137-C401,F137-D401 F151-C401,F151-D401	1H4123P02	1				
6	GASKET 密封条	F137-C101,F137-D101 F151-C101,F151-D101	474046P04	3				
7	DUAL CHEEK VALVE 检查阀	F136-D201	P03380-01	1				
8	NIPPLE 喷嘴	F136-D201	P03381-01	1				