



# HOSHIZAKI

# KM-60C HC

## Crescent 52kg Ice Maker - Self Contained

Model Number  
91000148



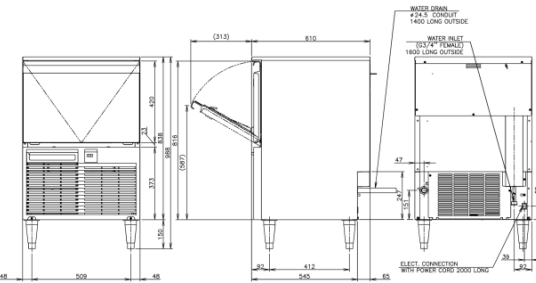
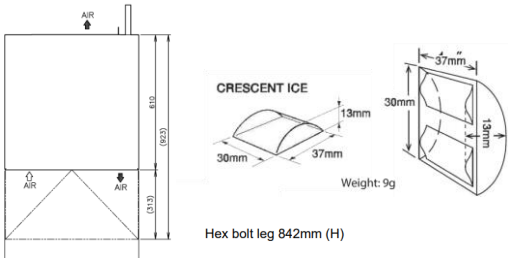
NATURAL  
REFRIGERANT

## PRODUCT FEATURES

- Individually shaped crescent ice.
- Protected by HoshiGuard Antimicrobial Agent.
- CycleSaver® technology includes a double-sided evaporator, uniquely crafted in stainless steel, which produces ice on both sides, resulting in more ice in less amount of time.
- EverCheck™ Control Board with audible alarm and diagnostic features, designed to assist service technicians in diagnosing problems.
- Accessible digital operation panel allows for easy identification of operation status and cause of faults.
- Automated cleaning function makes cleaning simple and save time.
- Durable stainless-steel exterior.
- Easily removable & cleanable air filters on front panel.
- Accessories: Manual, Scoop, check valve, Hex Bolt legs and 150mm adjustable legs included (water filter and optional hex bolt legs sold separately)



## TECHNICAL DRAWING



## PRODUCT SPECIFICATION

|                              |   |
|------------------------------|---|
| Production Capacity / 24hrs  | Approx. 52kg @ 21°C Air temp; 15°C Water<br>Approx. 37kg @ 32°C Air temp; 21°C Water                              |
| Max Storage Capacity         | Approx. 23kg  |
| Freeze Cycle Time            | Approx. 26 Min (At. 21°C Air ; 15°C Water)  |
| Ice Production / cycle       | Approx. 0.96kg/110pcs   |
| Dimensions                   | 605mm (W) x 610mm (D) x 988mm (H)<br>(982-1005mm (H) with 150mm adjustable legs)<br>(842mm (H) with hex bolt leg) |
| Cooling                      | Air   |
| Weight Net/Gross (kg)        | 45/57   |
| Refrigeration System         | Forced Air Circulation  |
| AC Supply Voltage            | 1 PHASE 220-240V 50Hz / 10amp Plug  |
| Amperage                     | Running: 1.6A Starting: 8.5A  |
| Refrigerant Charge           | R290/90g  |
| <b>Operating Conditions:</b> |   |
| Ambient Temp                 | 7-38°C  |
| Water Supply Temp            | 7-32°C  |
| Water Supply Pressure        | 0.07-0.8MPa (0.7-8bar)  |
| Voltage Range                | ±6%   |
| Electrical consumption       | Rated Motor: 255W (Power Factor: 63%)   |
| Water Consumption / 24hrs    | Approx. 0.14m³/d(AT. 21°C ; WT 15°C)  |



For free 6 month extended warranty, register online within 4 weeks of purchase date.  
[hoshizaki.com.au](http://hoshizaki.com.au)

## INSTALLATION REQUIREMENTS

- Qualified plumber required for installation.
- Allow 15cm clearance at rear, sides and top for proper air circulation and ease of maintenance.
- Hoshizaki recommends the use of a compatible water filter to prevent non-warrantable s cations.

\*Refer to manual for full installation & maintenance requirements.

