



HOSHIZAKI

DCM-60KE-P

50 KG ICE & WATER DISPENSER

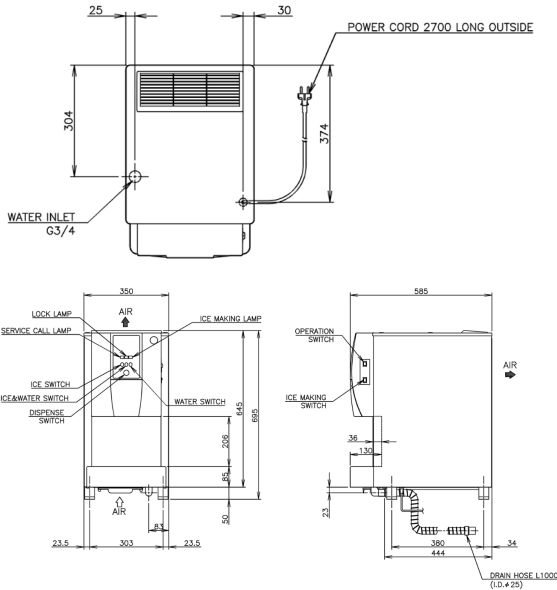
Model Number
91000116

PRODUCT FEATURES

- Premium Cubelet ice.
- Smooth ice dispense.
- No ice bridging.
- Robust and reliable.
- Sanitary self-service application.
- Easy operation – Push button; dispense ice directly in to container greatly reducing risk of contamination.
- Dispenses ice only, water only or ice and water.
- Adjustable portion-controlled dispensing.
- Due to auger system water consumption is equal to ice production.
- 2 year parts & labour on entire unit, 5 year (parts only) on compressor & air cooled condenser coil.



TECHNICAL DRAWING



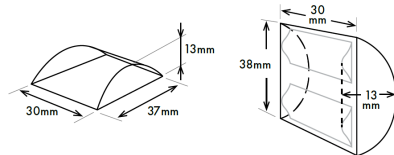
PRODUCT SPECIFICATION

Production Capacity / 24hrs Approx. 60kg @ 10°C Air temp; 10°C Water
 Approx. 50kg @ 21°C Air temp; 15°C Water
 Approx. 38kg @ 32°C Air temp; 21°C Water

Max Storage Capacity	Approx. 1.9kg
Dimensions	350mm (W) x 585mm (D) x 695mm (H)
Cooling	Air
Weight Net/Gross (kg)	47/56
Refrigerant Charge	R134a
AC Supply Voltage	1 PHASE 220-240V 50Hz/ 10 AMP Plug
Amperage	Rated: 1.5 A Starting: 9.5 A

Operating Conditions:

Ambient Temp	5-40°C
Water Supply Temp	5-35°C
Water Supply Pressure	0.05-0.78MPa
Voltage Range	±6%



INSTALLATION REQUIREMENTS

- Ensure the condenser is cleaned periodically as per the manufacturer's manual.
- Do not plug the unit into multi-plug power boards with other appliances
- Room ventilation or air conditioning can improve the situation by reducing the humidity.
- Hoshizaki recommends the use of a compatible water filter to prevent non-warrantable scale & sediment complications.

*Refer to manual for full installation & maintenance requirements.



For free 6 month extended warranty, register online within 4 weeks of purchase date.
hoshizaki.com.au

