



ICE STORAGE BIN

B-501SA

PARTS LIST

[CHINA, HLP, HKR]

G007, G007-C101, G007-C102, G007-C104
G007-C105, G007-C106, G007-C107, G007-C108

U-1 JUL. 2009
N-1 MAY. 2023

List of Specifications

| MODEL | MODEL NUMBER | DESTINATION |
|---------|--------------|-------------|
| B-501SA | G007 | CHINA |
| B-501SA | G007-C101 | HLP |
| B-501SA | G007-C102 | CHINA |
| B-501SA | G007-C104 | HKR |
| B-501SA | G007-C105 | HSH |
| B-501SA | G007-C106 | HSH |
| B-501SA | G007-C107 | HLP |
| B-501SA | G007-C108 | HKR |

AUXILIARY CODE

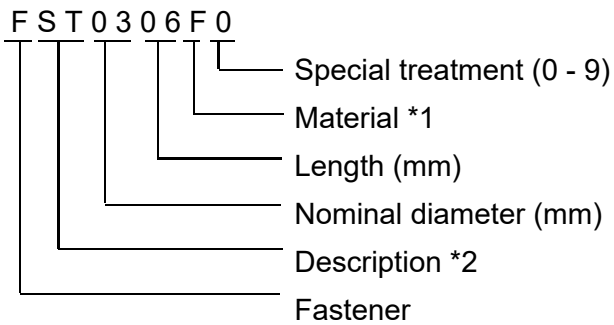
U - 1

The auxiliary code is the first two characters in the serial number. The first character indicates the production year. Years progress or regress in alphabetical order. The series of letters and skipped letters depend on UL listing, production, and model. See the auxiliary code(s) and corresponding year(s) on the front cover.

The second character indicates significant part changes within the same year. Base is "1" and this number advances for each change. If there is no significant part change at the turn of the year, this number starts from "0."

FASTENER PART NUMBER

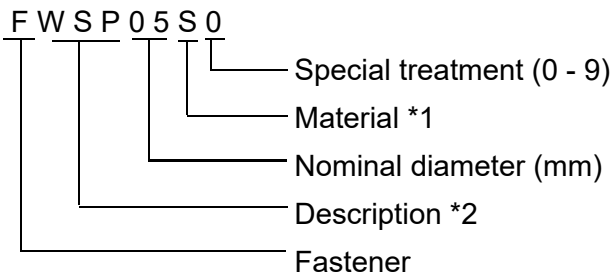
SCREWS



*1

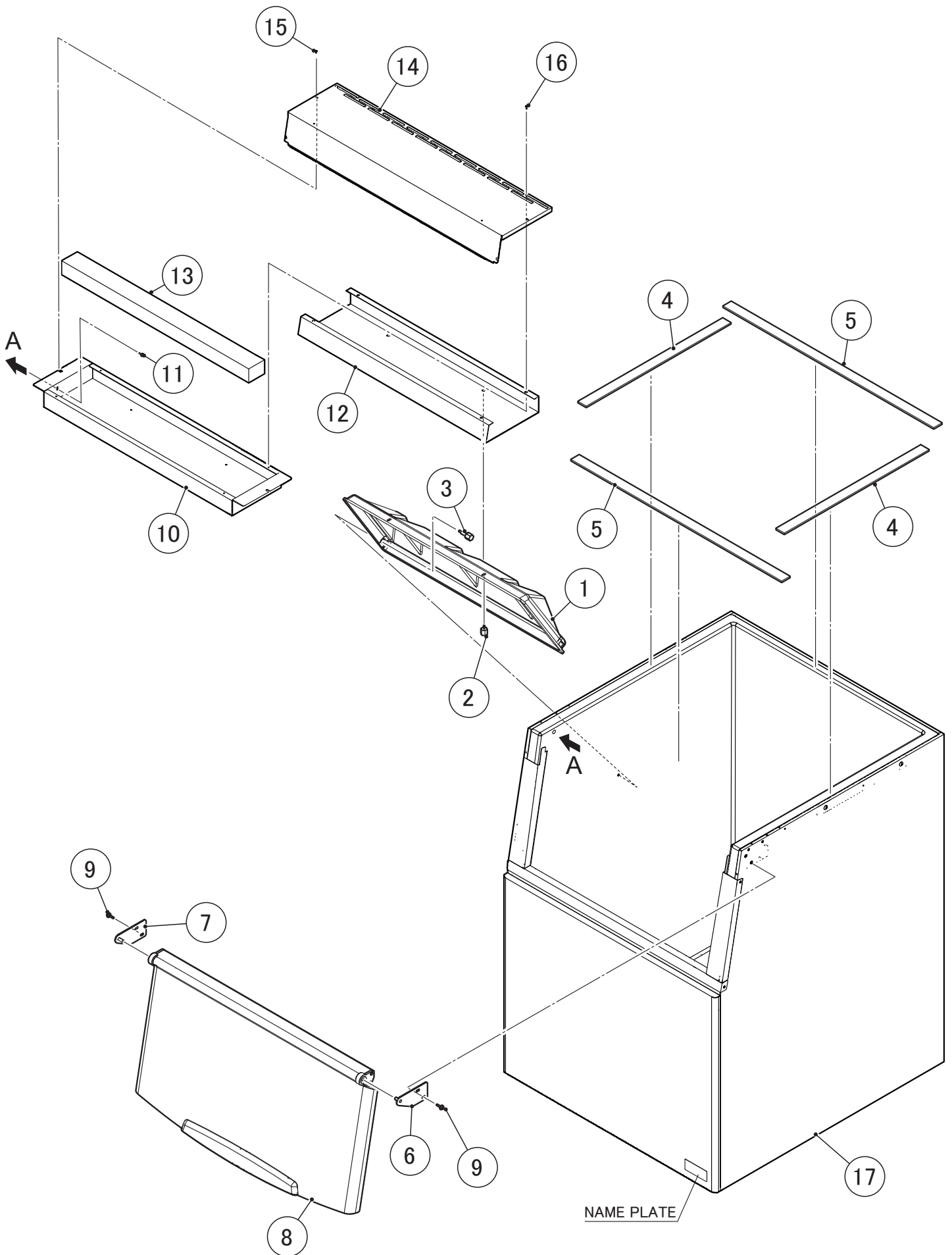
- F: Steel
- S: Austenitic stainless steel
- M: Martensitic stainless steel
- B: Copper alloy
- P: Polycarbonate
- N: Polyamide
- V: PVC
- A: ABS
- X: Polyacetal
- L: Aluminum

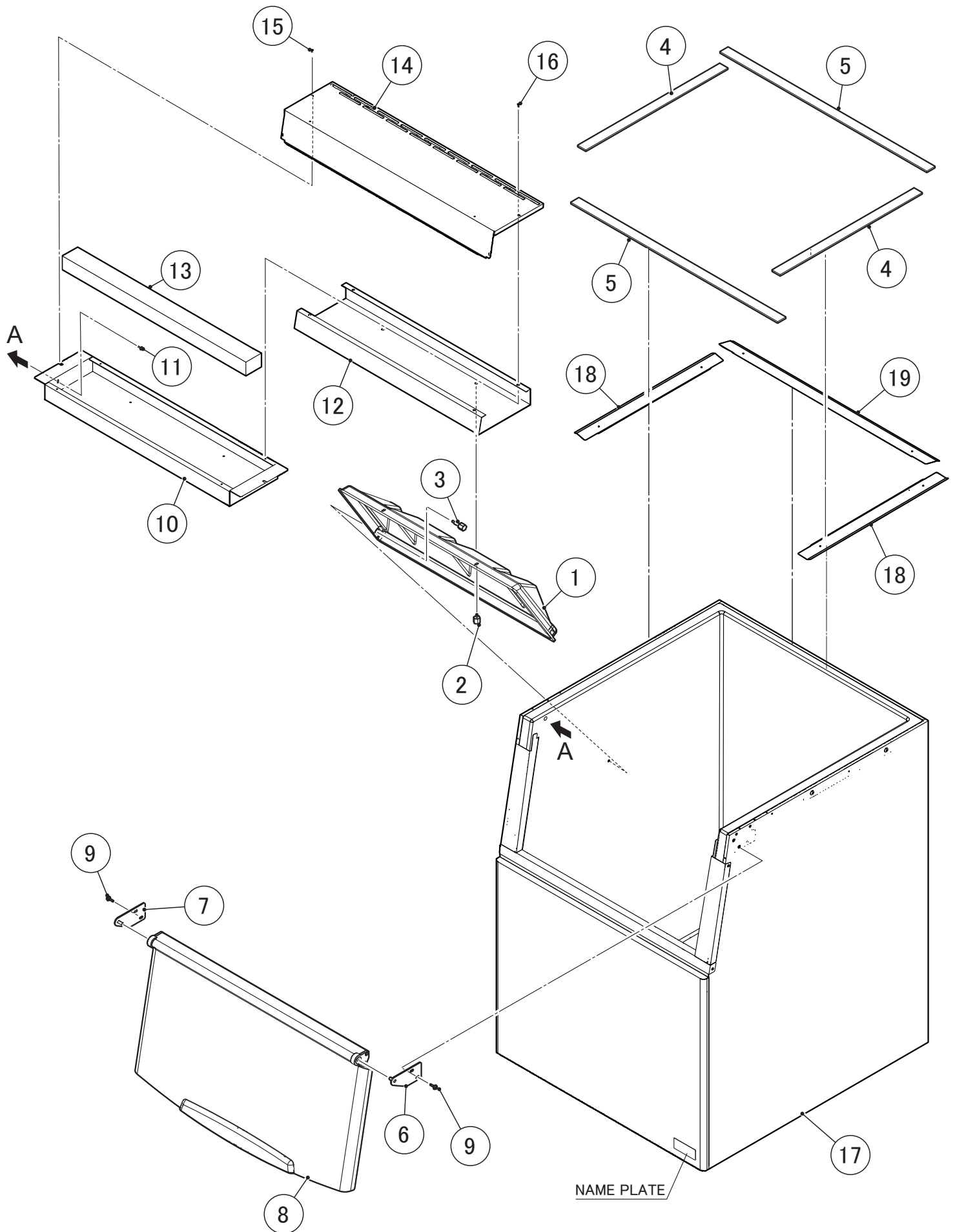
NUTS & WASHERS



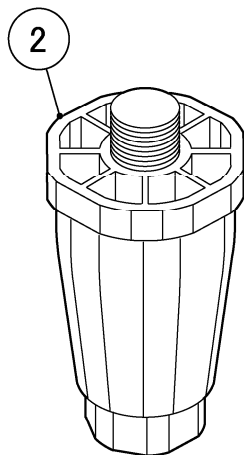
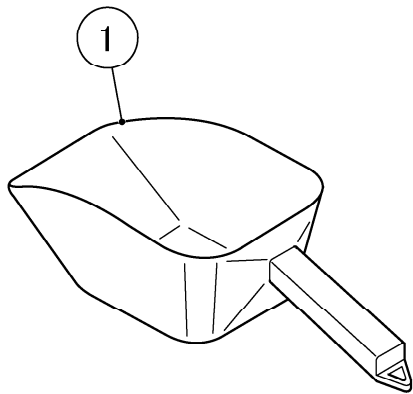
*2

- First letter
- S: Machine screw
- T: Tapping screw
- M: Wood screw
- B: Bolt
- W: Washer
- N: Nut

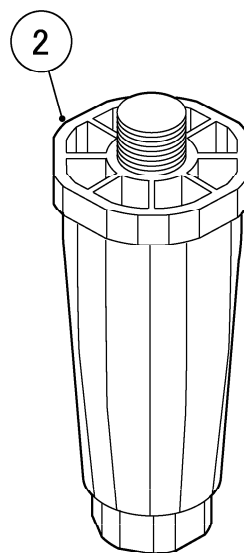




| MODEL: B-501SA | | TITLE: A. BIN ASSEMBLY | | | | | |
|-----------------------|--------------------------------|---------------------------------|-------------|--------------|------------------|--|--|
| INDEX NO. | DESCRIPTION | MATERIAL OR MODEL NUMBER | PART NUMBER | REQ'D NUMBER | | | |
| | | | | U-1 N-0 | N-1 and later | | |
| B | ACCESSORIES | except G007-C101 | A01904-01 | 1 | 1 | | |
| | | HLP G007-C101 | A01904002 | 1 | 1 | | |
| | | | | | | | |
| 1 | BAFFLE - 5 | | 119678P01 | 1 | 1 | | |
| 2 | THUMBSCREW | | 415949G11 | 2 | 2 | | |
| 3 | THUMBSCREW | | 434168G01 | 2 | 2 | | |
| 4 | GASKET | | 474046P01 | 2 | 2 | | |
| 5 | GASKET | | 474046P02 | 2 | 2 | | |
| 6 | HINGE (R) | | 474049G01 | 1 | 1 | | |
| 7 | HINGE (L) | | 474048G01 | 1 | 1 | | |
| 8 | DOOR - 5 | | 257304G01 | 1 | 1 | | |
| 9 | FLANGE BOLT | | P02005-01 | 4 | 4 | | |
| 10 | FRONT FRAME-5 | | 372914M01 | 1 | 1 | | |
| 11 | TRUSS HEAD TAPPING SCREW T2 | | FT20414M0 | 2 | 2 | | |
| 12 | FRONT FRAME COVER-5 | | 372915P01 | 1 | 1 | | |
| 13 | INSULATION(C) | | 372942P02 | 3 | 3 | | |
| 14 | TOP COVER-5 | | 257288M01 | 1 | 1 | | |
| 15 | RIVET | | 7170-0002 | 4 | 4 | | |
| | | G007-C105,-C106,-C107 | | - | 10 | | |
| | | G007-C108 | 7170-0204 | - | 6 | | |
| 16 | RIVET | | 7170-0005 | 5 | 5 | | |
| 17 | BIN BODY-5 | | 119676G01 | 1 | 1 | | |
| 18 | SIDE PANEL-B | G007-C105,-C106,-C107, -C108 | 3C0667M01 | - | 2 | | |
| 19 | REAR PANEL-B | G007-C105,-C106,-C107, -C108 | 3C0668M02 | - | 1 | | |



(CHINA:H90)



(HLP:H150)

MODEL: **B-501SA**

TITLE: **B. ACCESSORIES**

| INDEX NO. | DESCRIPTION | MATERIAL OR MODEL NUMBER | PART NUMBER | REQ'D NUMBER | | | |
|-----------|-------------|--------------------------|-------------|---------------|--|--|--|
| | | | | U-1 and later | | | |
| 1 | SCOOP | | 208185-01 | 1 | | | |
| 2 | LEG | except G007-C101 | P04879-01 | 4 | | | |
| | | HLP G007-C101 | P05012-01 | 4 | | | |
| | | | | | | | |